

R^H**C**^I**D** **2023** U.S. Nuclear Regulatory Commission
35th Annual Regulatory Information Conference



NAVIGATING ^{the} NUCLEAR FUTURE

MARCH 14-16, 2023

Bethesda North Marriott Hotel
and Conference Center
Rockville, Maryland



WWW.NRC.GOV

#NRCRIC2023



Reflection

DeFRETAS
@DEFRETAS . @GLOBEINT.COM



Kathryn Higley, PhD, MPP, HPS Fellow

Distinguished Professor of Nuclear Science and Engineering
Interim Director, Center for Quantitative Life Sciences



NAVIGATING the
NUCLEAR FUTURE



DeFRETAS
JFDEFRETAS.BLOGSPOT.COM

A “science” whisperer?



NAVIGATING the
NUCLEAR FUTURE



Major Points for Today

- A. Communication is two-way
- B. Keep up on the (radiation) science
- C. Bring your experience to the discussion





A. Communication is Two Way



DOE/PPPO/03-0932&D1 FBP-ER-RCRA-WD-
RPT-0320 Revision 3 June 2020

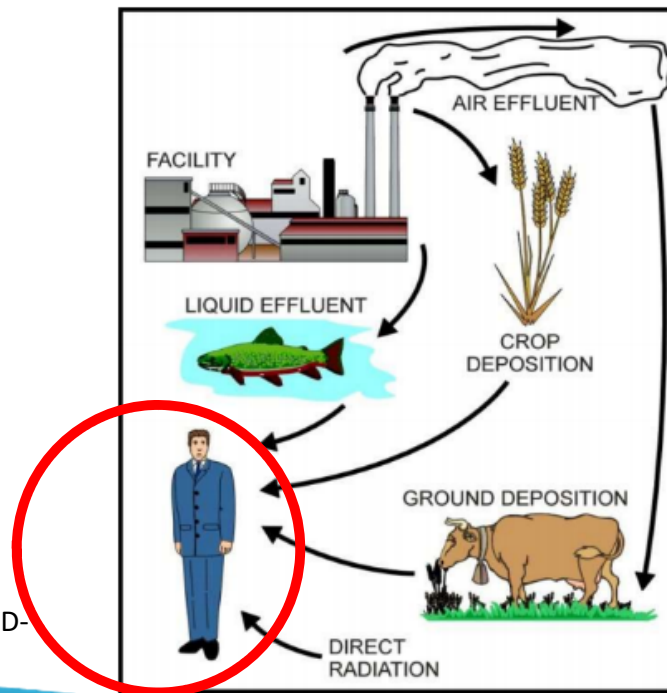
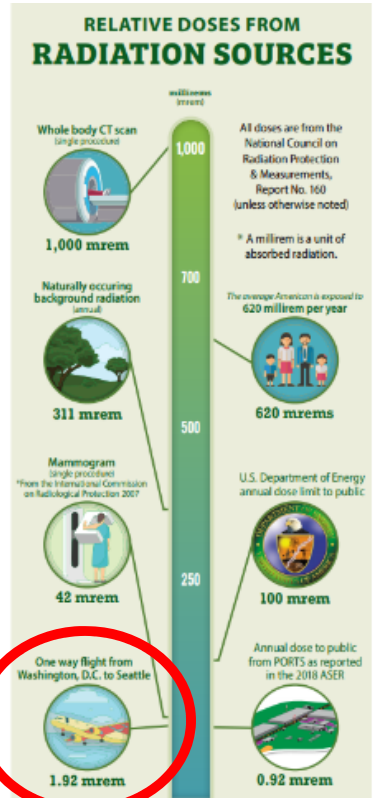


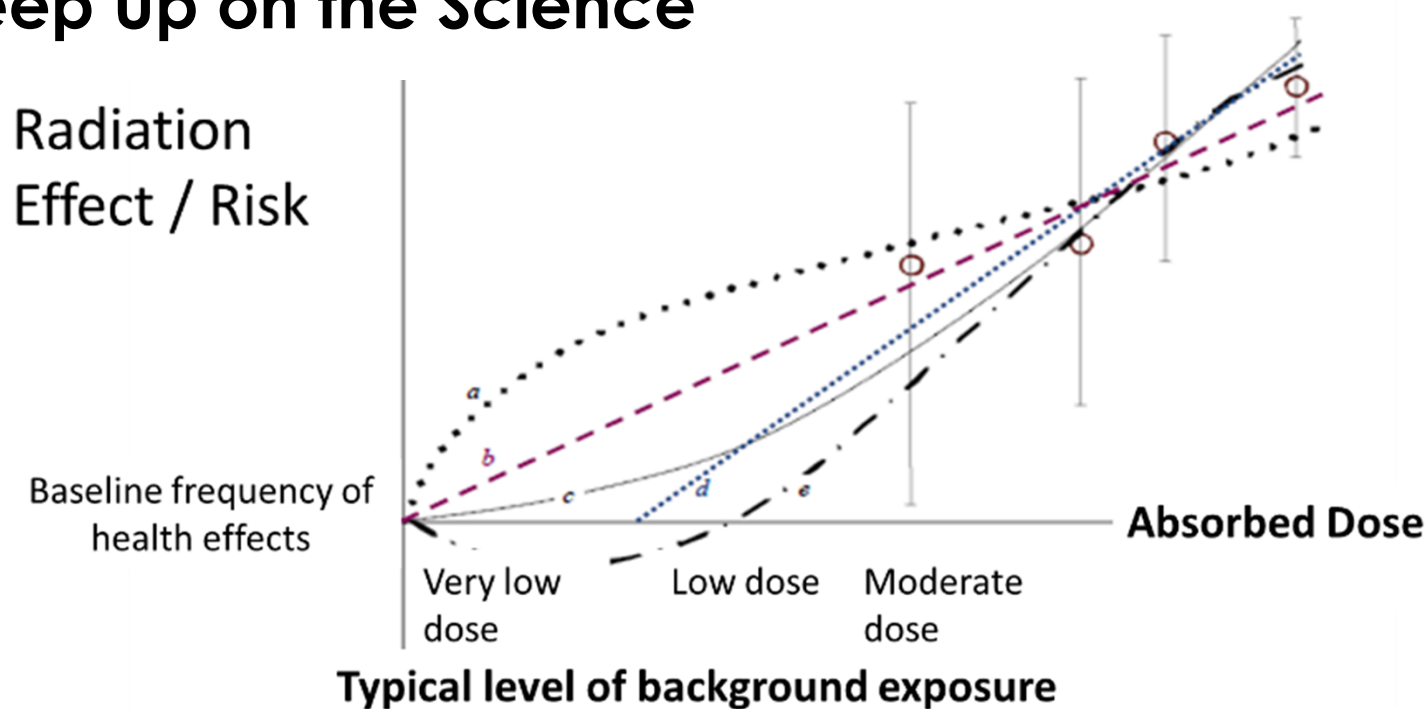
Figure R.3. Possible radiation pathways.



NAVIGATING the
NUCLEAR FUTURE



B. Keep Up on the Science



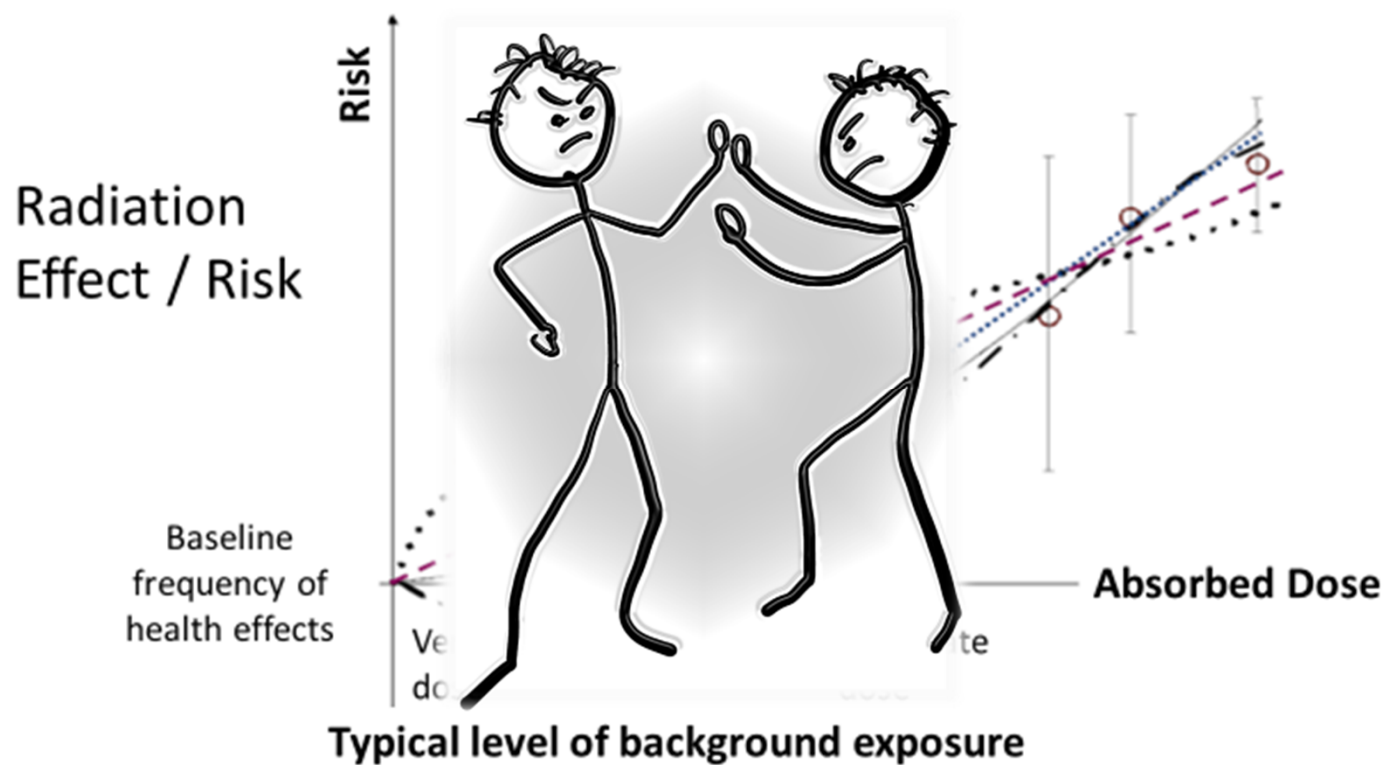
R^{HYBRID}C 2023

U.S. Nuclear Regulatory Commission
35th Annual Regulatory Information Conference



MARCH 14-16, 2023

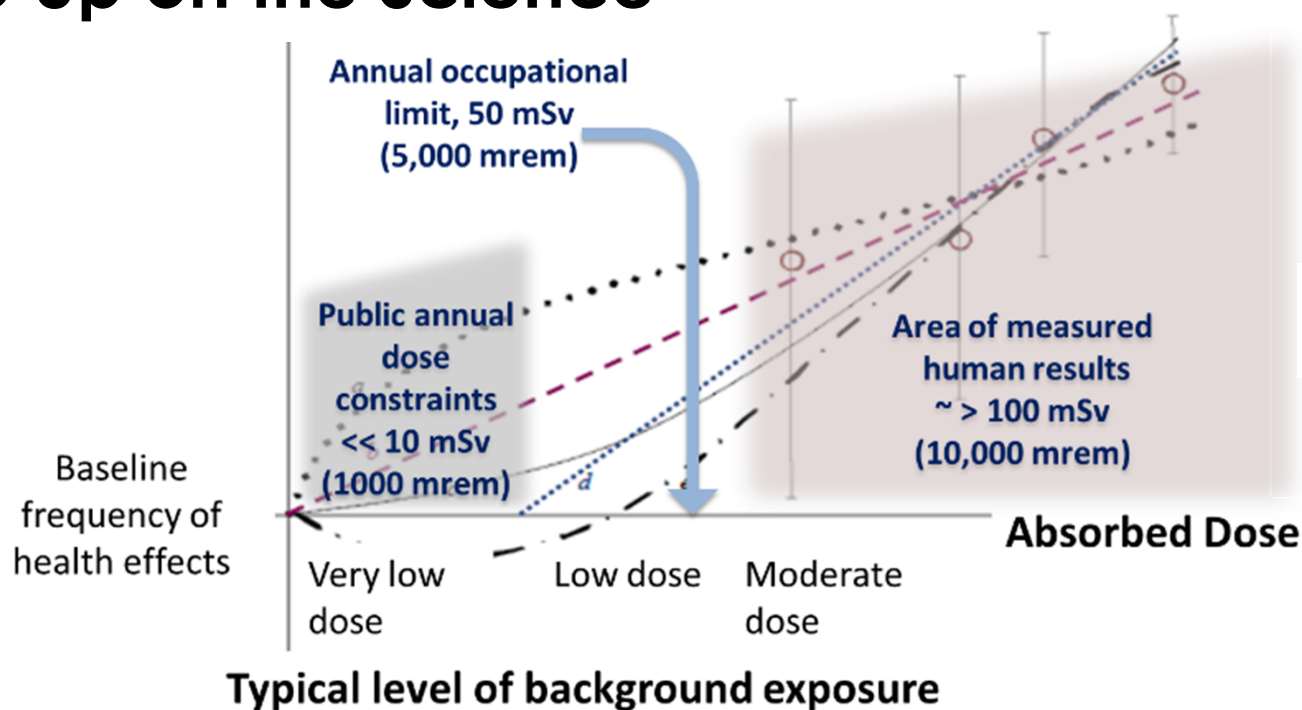
WWW.NRC.GOV #NRCRIC2023



NAVIGATING the
NUCLEAR FUTURE



B. Keep Up on the Science



...and keep it in perspective



NAVIGATING the
NUCLEAR FUTURE



C. Bring All Your Experience to the Discussion

- Work
- Life
-*Other?*





Final Elevator Pitch:

1. Listen to your audience
2. Never stop trying to communicate
3. Understand your subject
4. Be honest about what you don't know
5. Avoid canned soundbites
6. Be authentic
7. Don't take things personally
8. Don't be overly impressed with yourself





Thank You!



2011



NAVIGATING the
NUCLEAR FUTURE

R^{HYBRID}C 2023

U.S. Nuclear Regulatory Commission
35th Annual Regulatory Information Conference



MARCH 14-16, 2023

WWW.NRC.GOV #NRCRIC2023

Contact Information

Kathryn A. Higley, PhD, CHP, HPS Fellow

Interim Director **CQLS - Center for Quantitative Life Sciences**

OSU Distinguished Professor, School of Nuclear Science and Engineering

Oregon State University | 3021 ALS, 2750 Campus Way |

kathryn.higley@oregonstate.edu



Oregon State University
College of Engineering



NAVIGATING the
NUCLEAR FUTURE