

Clinch River Nuclear Site  
Early Site Permit Application  
Part 2, Site Safety Analysis Report

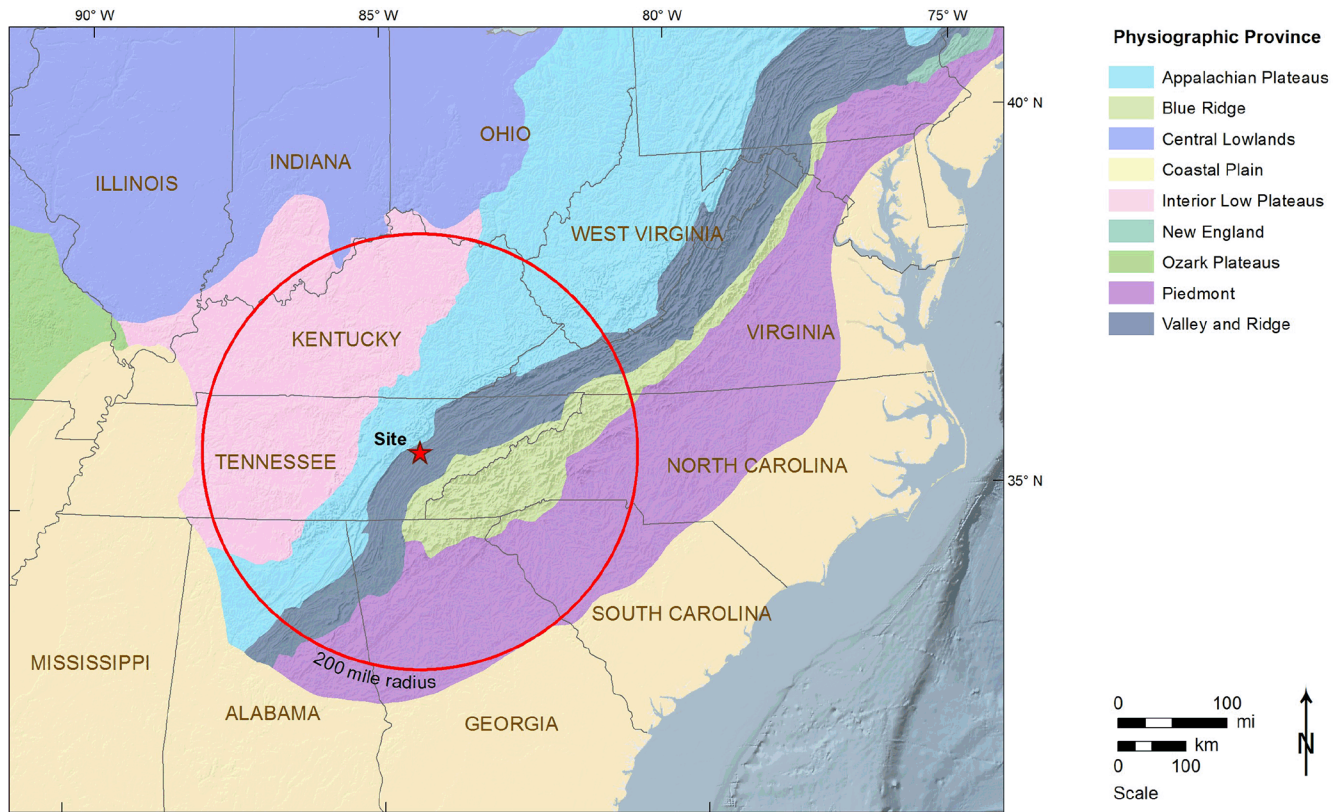
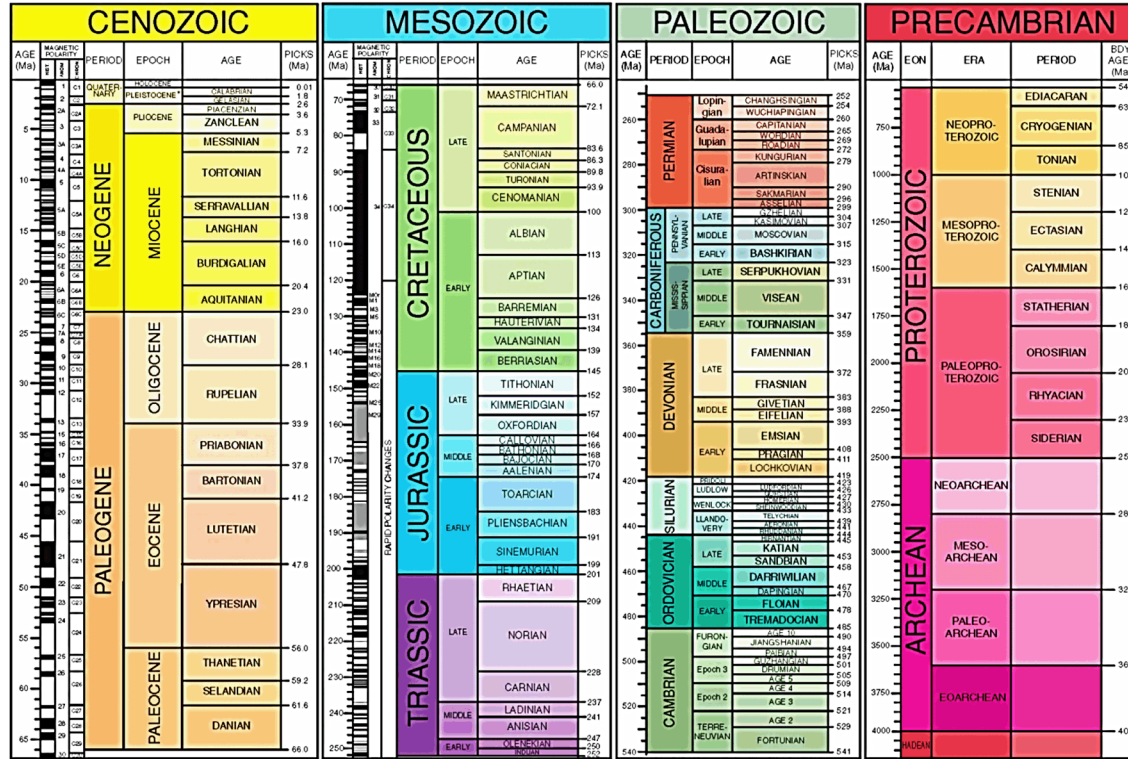


Figure 2.5.1-1. Map of Physiographic Provinces

## GSA GEOLOGIC TIME SCALE v. 4.0

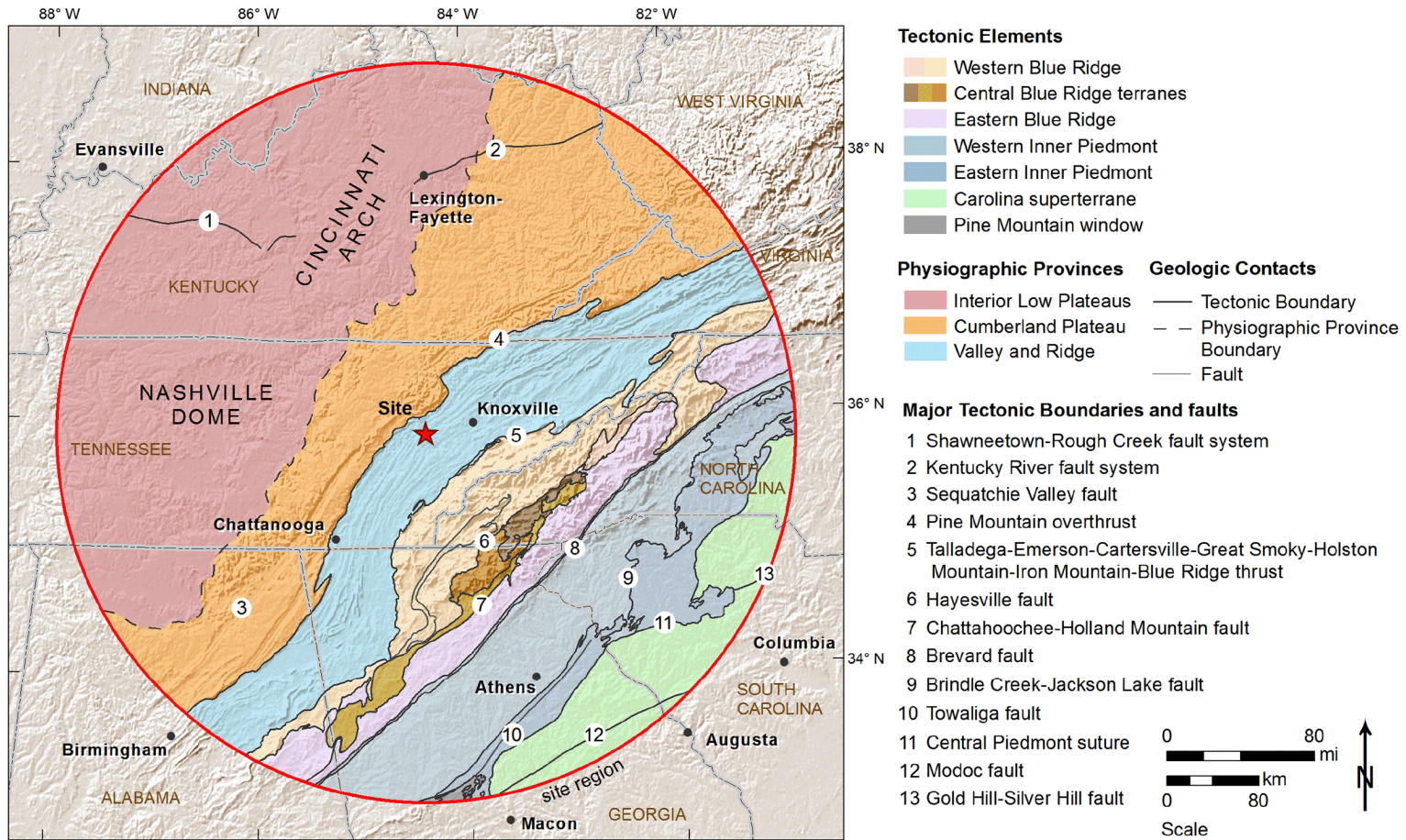


\*The Pleistocene is divided into four ages, but only two are shown here. What is shown as Calabrian is actually three ages—Calabrian from 1.8 to 0.78 Ma, Middle from 0.78 to 0.13 Ma, and Late from 0.13 to 0.01 Ma. Walker, J. D., Gessman, J. W., Bowring, S. A., and Babcock, L. E., compilers, 2012, Geologic Time Scale v. 4.0. Geological Society of America, doi: 10.1130/2012.CT5004R3C. ©2012 The Geological Society of America. The Cenozoic, Mesozoic, and Paleozoic are the Eras of the Phanerozoic Eon. Names of units and age boundaries follow the Gradstein et al. (2012) and Cohen et al. (2012) compilations. Age estimates and picks of boundaries are rounded to the nearest whole number (1 Ma) for the pre-Cenomanian, and rounded to one decimal place (100 ka) for the Cenomanian to Pleistocene intervals. The numbered epochs and ages of the Cambrian are provisional. REFERENCES CITED: Cohen, K. M., Finney, S., and Gibbard, P. L., 2012, International Chronostratigraphic Chart. International Commission on Stratigraphy, www.stratigraphy.org (last accessed May 2012). (Chart reproduced for the 34th International Geological Congress, Brisbane, Australia, 5-10 August 2012.) Gradstein, F. M., Ogg, J. G., Schmitz, M. D., et al., 2012, The Geologic Time Scale 2012. Boston, USA, Elsevier, DOI 10.1016/B978-0-444-59425-9.00004-4

Source: Reference 2.5.1-33

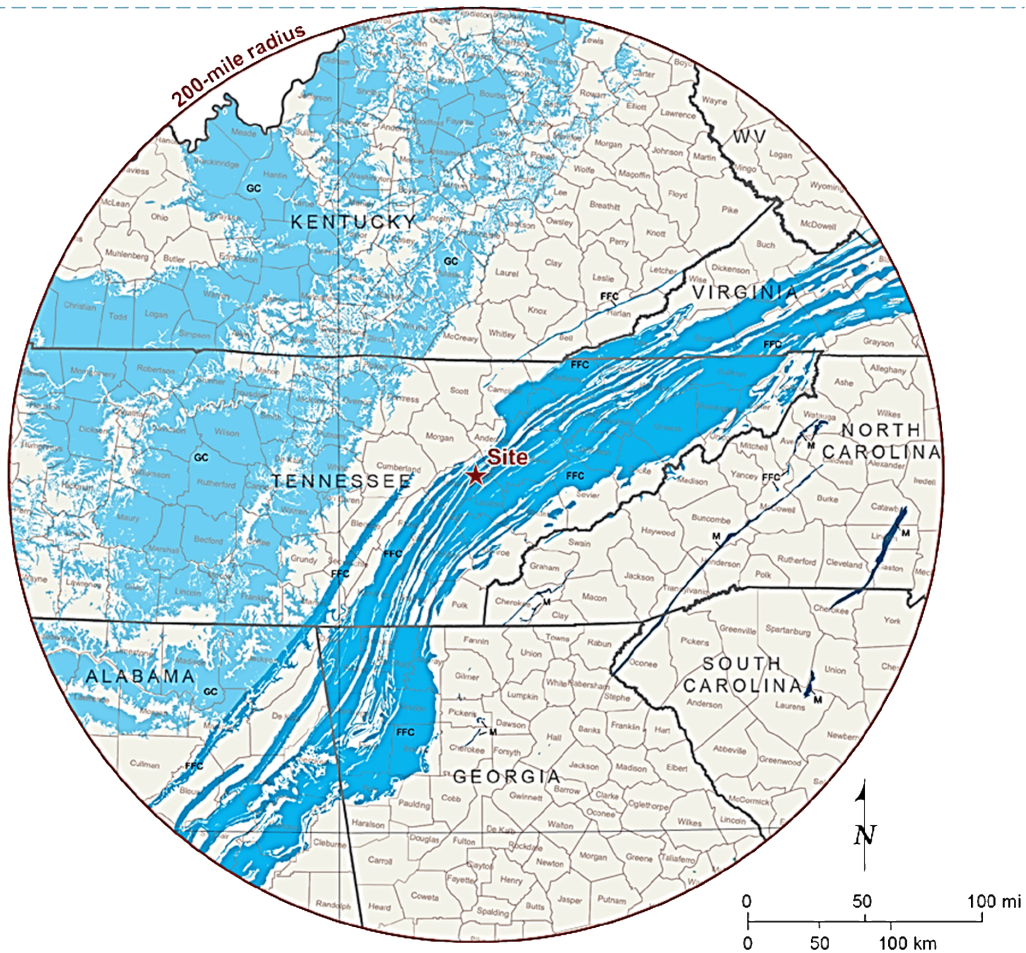
Figure 2.5.1-2. Geologic Time Scale

Clinch River Nuclear Site  
Early Site Permit Application  
Part 2, Site Safety Analysis Report



Note: Modified from [References 2.5.1-5, 2.5.1-24, and 2.5.1-34](#)

**Figure 2.5.1-3. Map of Lithotectonic Tectonic Terranes, Provinces and Major Tectonic Boundaries**

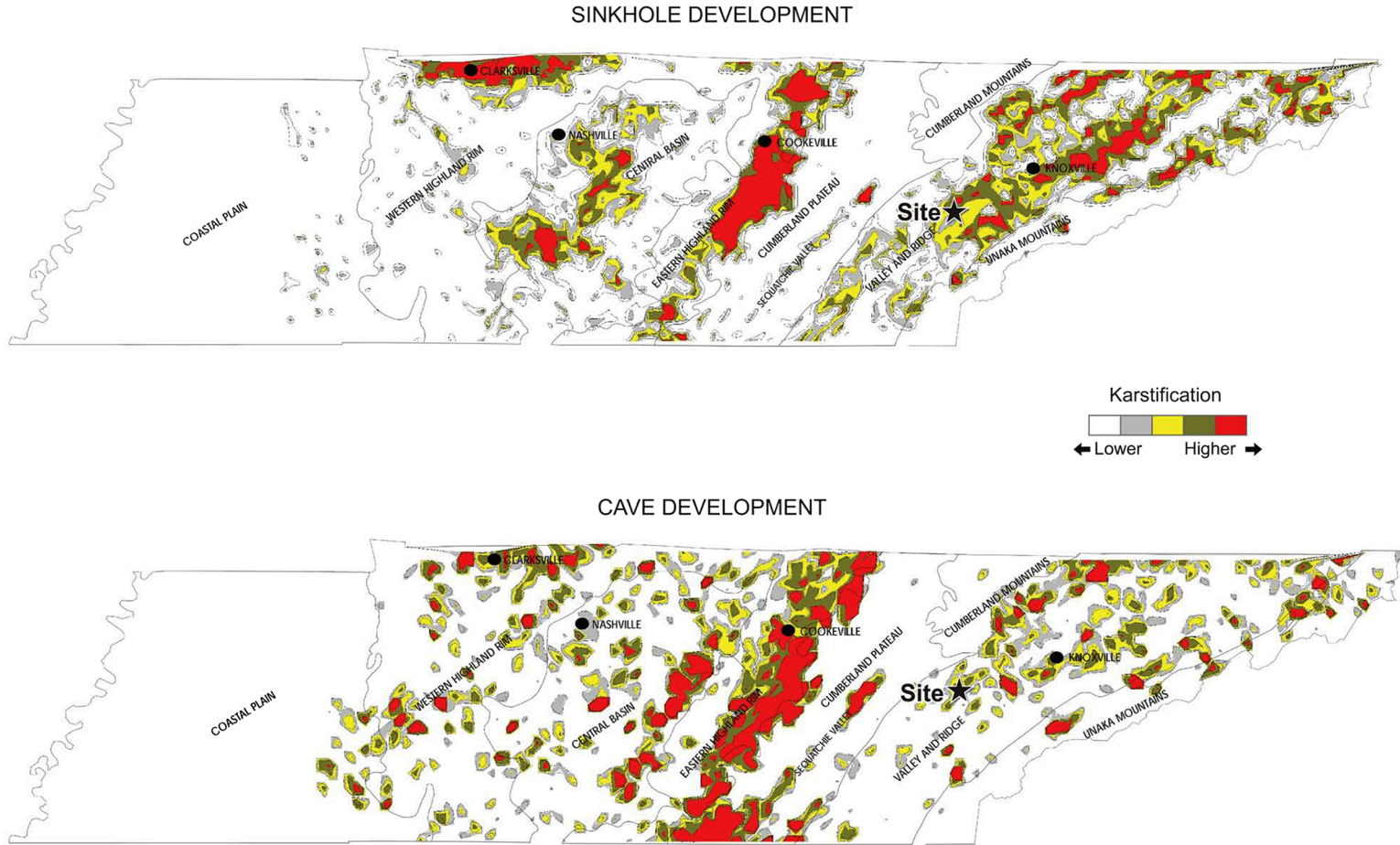


Source: Modified from Reference 2.5.1-26

#### Description of Map Units

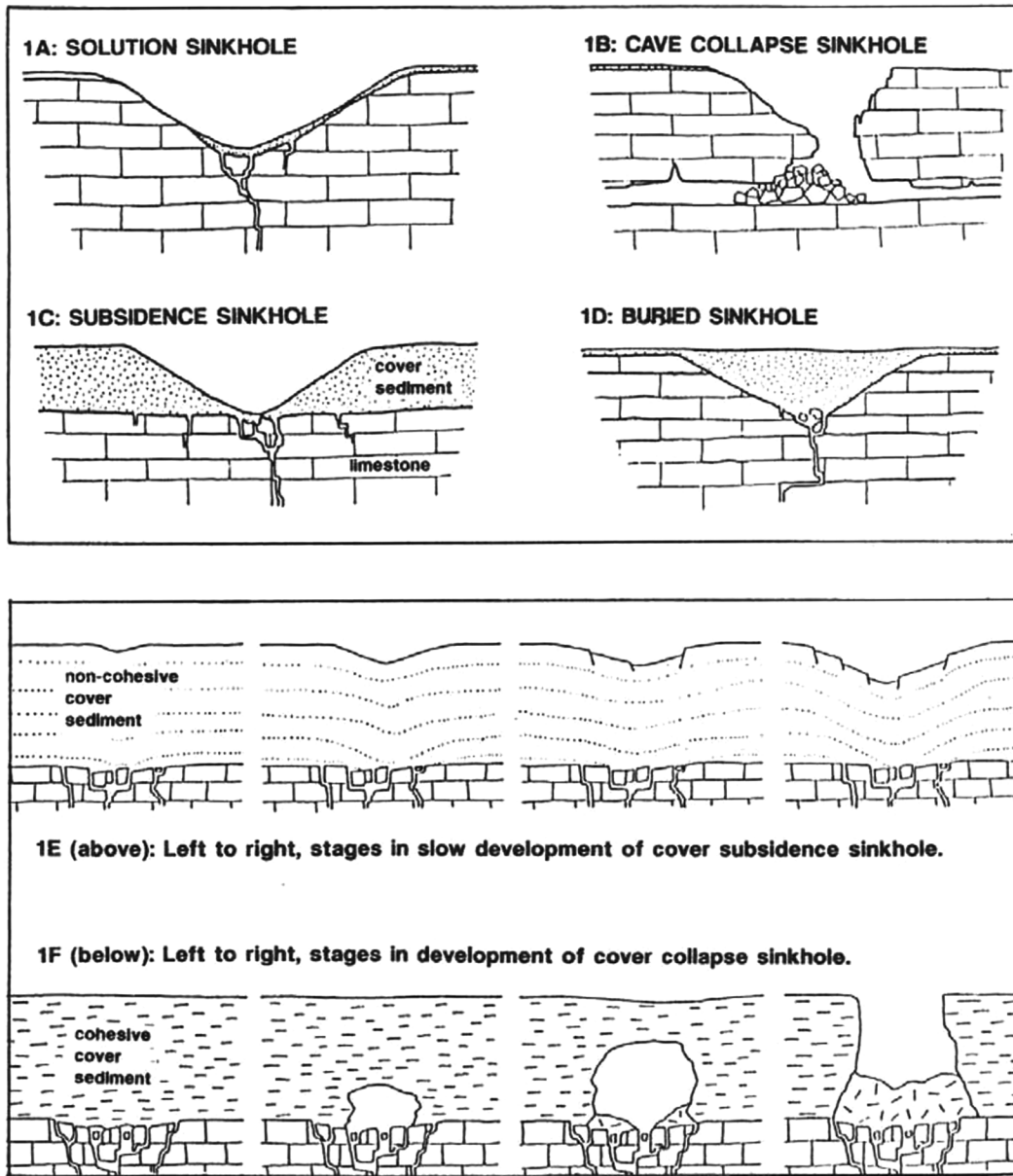
- GC** Gently folded and flat-lying carbonates rocks: indurated limestone and dolomite that has not been strongly deformed. Predominantly found in interior plateaus and lowlands. Dissolution may produce solution, collapse, and cover-collapse sinkholes. Where carbonates are thick and extensive, cave systems may be long and complex. Where thin and interbedded with non-carbonates, caves are small and short. Geometry of cave passage patterns often shows stratigraphic and bedding-plane control often resulting in branchwork caves. (Reference 2.5.1-35)
- FFC** Folded, faulted carbonate rocks: limestone and dolomite in areas flanking and in orogenic zones. May be intensely folded and faulted, commonly well jointed, commonly with cleavage. These rocks are located in the Valley and Ridge Province on this map and most are Paleozoic in age. Dissolution may produce solution, collapse, and cover-collapse sinkholes. Caves range from small and simple to long and complex systems. Geometry of cave passage patterns tend to show at least some structural control producing network caves. (Reference 2.5.1-35)
- M** Marbles and metalimestones: highly deformed carbonate rocks, usually found in long, thin, linear belts or pods. Mapped areas are often exaggerated as these rocks are usually mapped with associated, non-soluble metamorphic rocks. Dissolution may result in solution, collapse, and cover-collapse sinkholes and small, short caves.

**Figure 2.5.1-4. Regional Distribution of Carbonate Rocks**



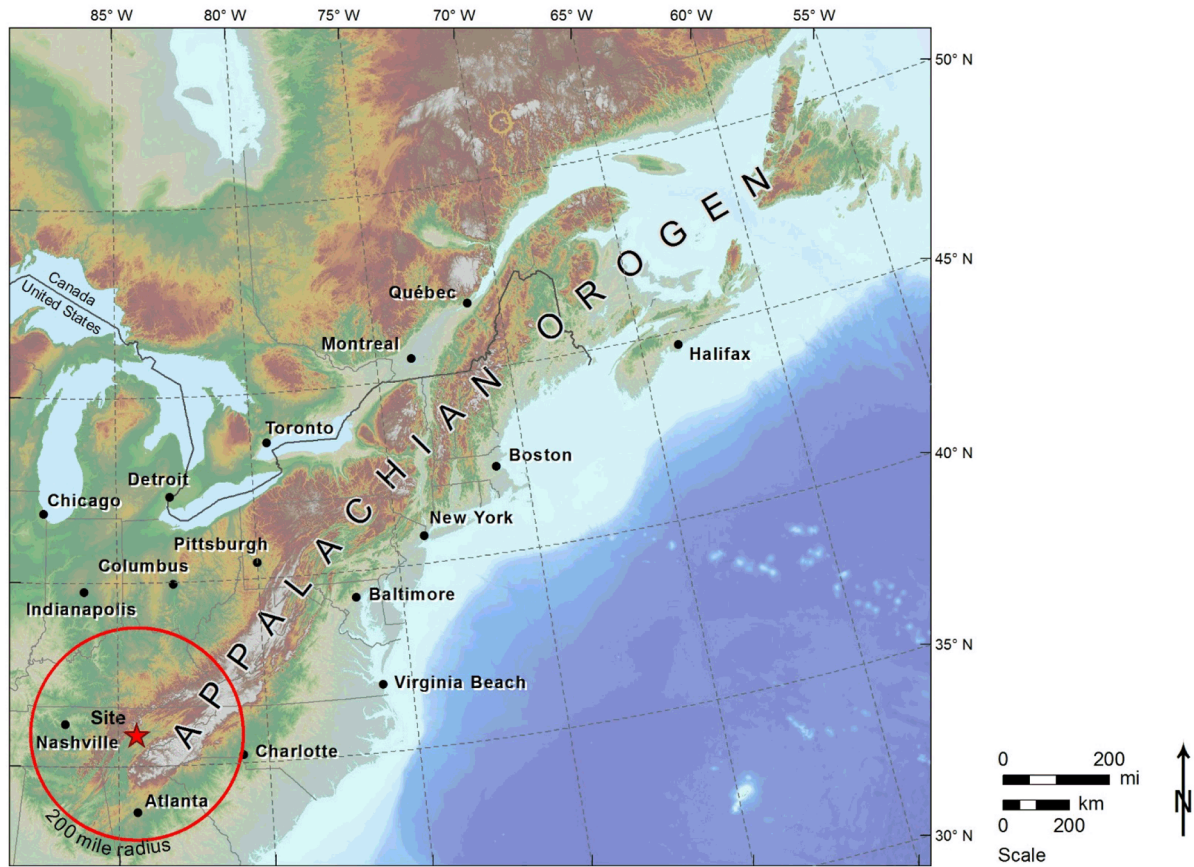
Source: Reference 2.5.1-25

Figure 2.5.1-5. Map of Sinkhole and Cave Development for the State of Tennessee



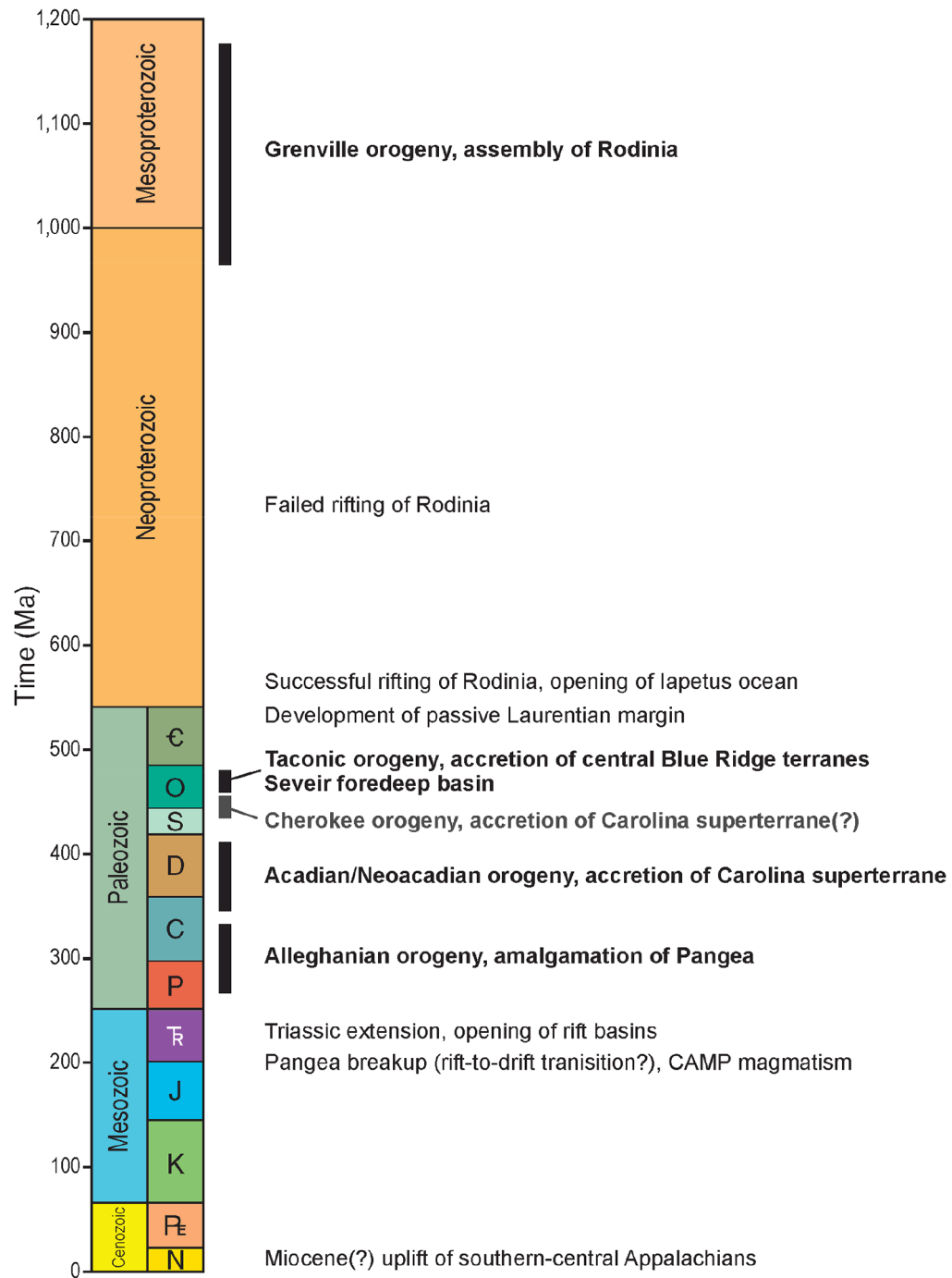
Note: [Reference 2.5.1-27](#)

**Figure 2.5.1-6. Sinkhole Types**



Note: Elevation and bathymetric data from [Reference 2.5.1-190](#), Sheet A-1.

**Figure 2.5.1-7. Shaded Relief Map of Eastern North America Demonstrating the Extent of the Appalachian Orogenic Belt**

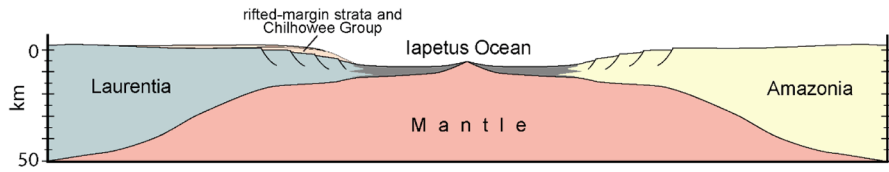


Note: Geologic time scale (Reference 2.5.1-33) with tectonic events that have affected the Appalachian orogenic belt (References 2.5.1-34 and 2.5.1-65).

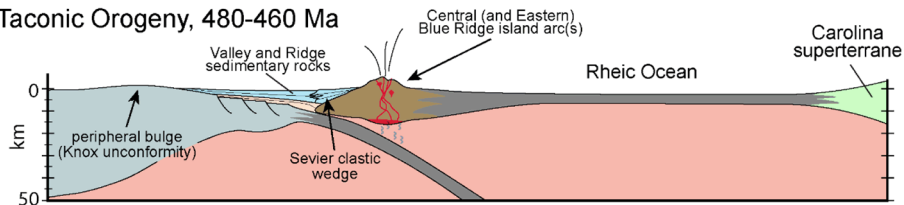
**Figure 2.5.1-8. Geologic Time Scale with Orogenic Events**



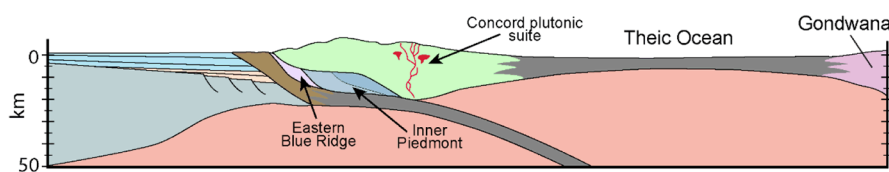
**Rodinia Breakup to Iapetus Passive Margin late Neoproterozoic-early Cambrian**



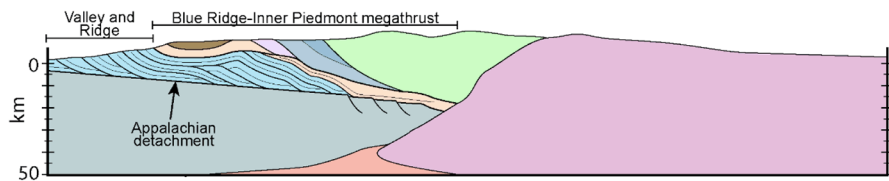
**Taconic Orogeny, 480-460 Ma**



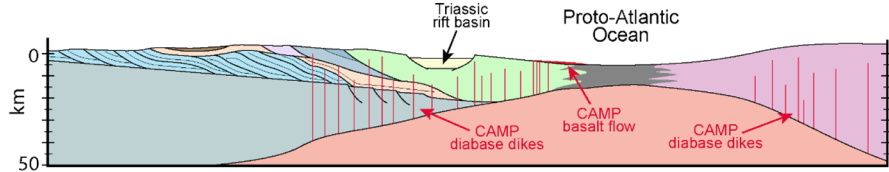
**Acadian-Neoacadian Orogeny, 415-355 Ma**



**Alleghanian Orogeny (Formation of Pangea), 340-280(?) Ma**

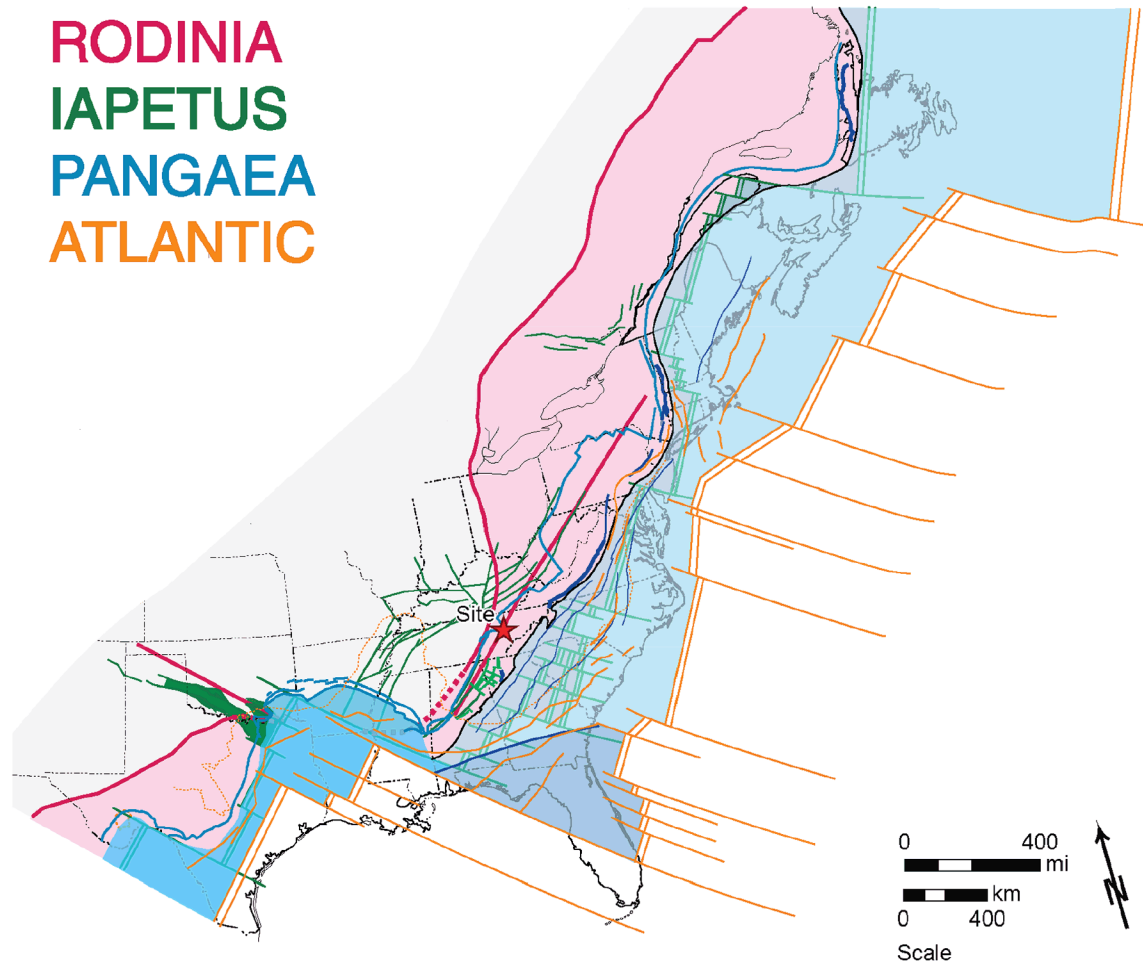


**Breakup of Pangea, ~200 Ma**



Notes:  
 Sequential development of the Appalachian orogen from the breakup of Rodinia to the breakup of Pangea, from Reference 2.5.1-73.  
 Deep crustal structure from Reference 2.5.1-277.  
 See Figure 2.5.1-3 for map of lithotectonic terranes.

**Figure 2.5.1-9. Sequential Development of Appalachians Profiles**



Notes:

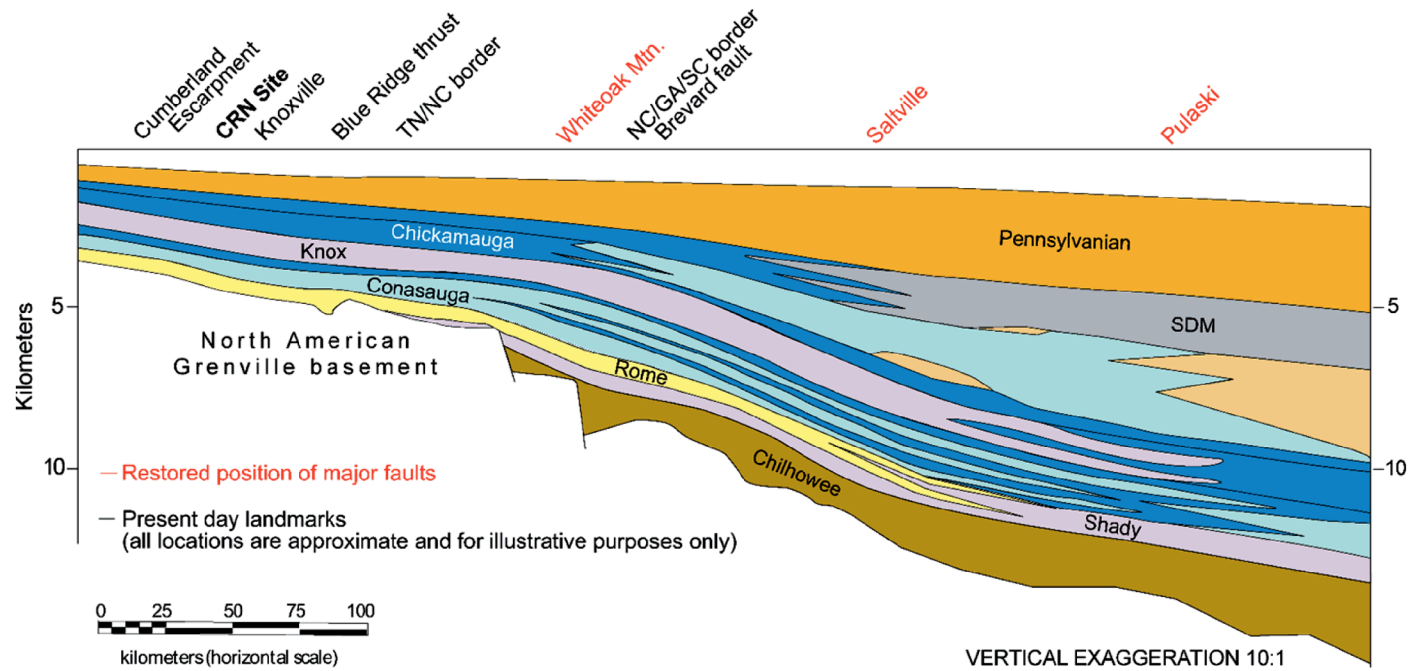
Map of eastern North America, illustrating tectonic inheritance through the amalgamation and breakup of two supercontinents.

Features formed during the Grenville orogeny (formation of Rodinia) shown in red; those formed during the Appalachian orogenies (formation of Pangea) shown in blue.

Rifted margins that formed from supercontinent breakup are shown in green (Iapetus ocean) and orange (Atlantic Ocean).

Modified from Thomas, 2006 Reference 2.5.1-38.

**Figure 2.5.1-10. North American Rifted Margin**



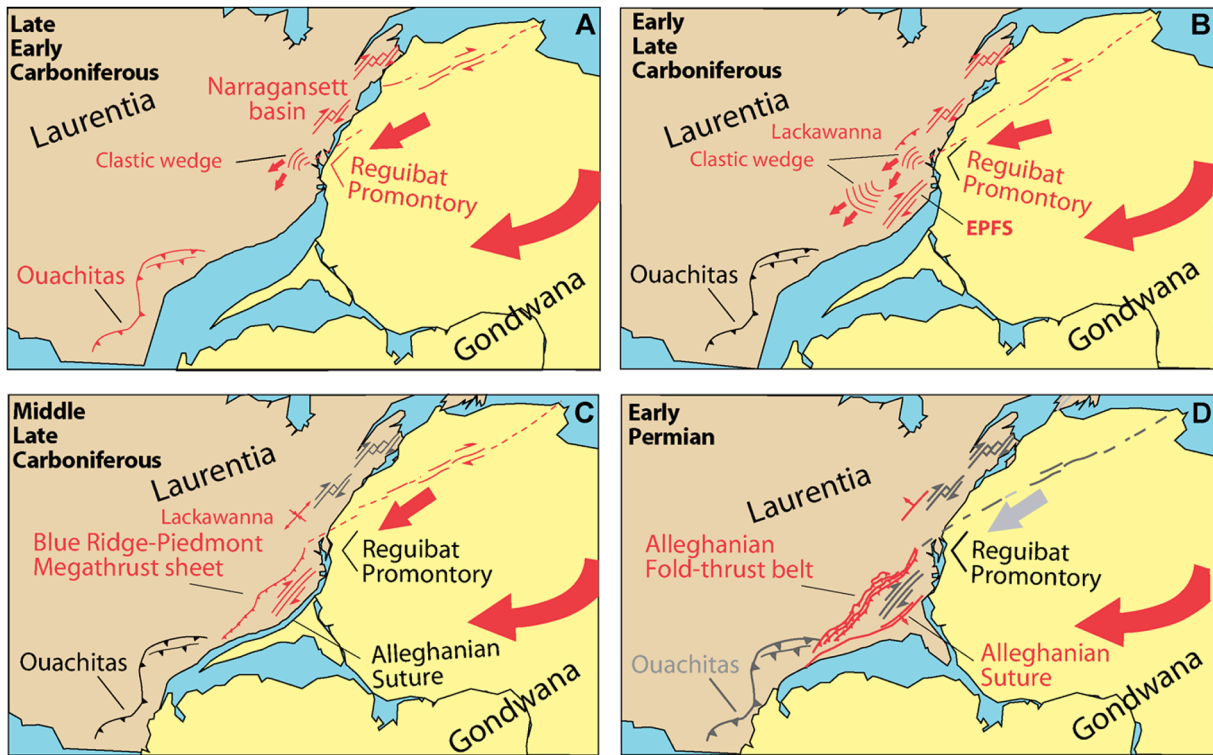
Notes:

Facies diagram of passive margin to stable shelf strata of the western Blue Ridge and Valley and Ridge (from Reference 2.5.1-13).

Units have been palinspastically restored along major Valley and Ridge thrust faults.

Blue — limestone facies; Lavender — dolomite facies; Light blue — shale facies; Beige and medium brown — coarse clastics and turbidites; Gray — siltstone facies; Light yellow — sandstone, shale, and dolomite intertidal facies.

**Figure 2.5.1-11. Facies Diagram of Stable Shelf Strata**



Notes:

Collision model for the Alleghanian orogeny (From Reference 2.5.1-74).

Red lines and symbols indicate the feature is active in the time interval shown.

A) Initial contact between Gondwana and Laurentia produced step-over basins in New England and deposition in the Appalachian basin.

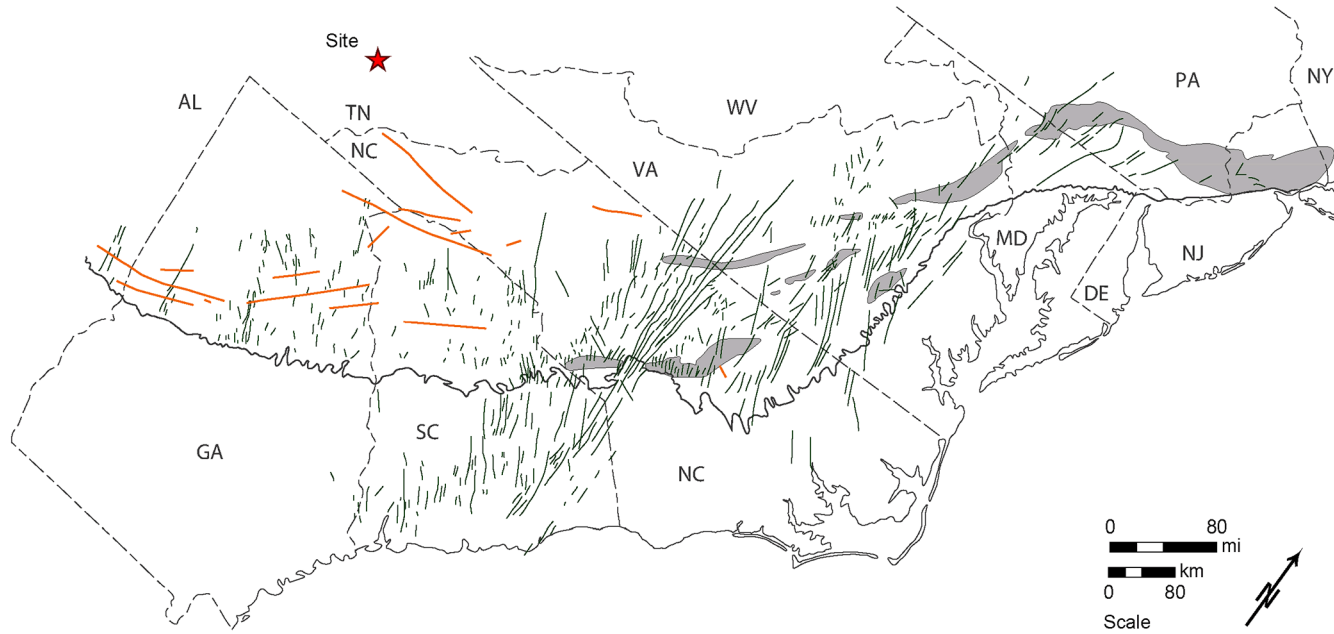
B) Continued collision resulted in greater clastic input in the foreland, with the development of dextral strike-slip faults in the interior of the orogen.

C) Clockwise rotation of Gondwana begins to dominate the collision, resulting in a more head-on collision in the southern Appalachians.

D) Head-on collision in the southern Appalachians results in thrusting of the Blue Ridge-Piedmont megathrust sheet and foreland fold-thrust belt development.

EPFS — Eastern Piedmont Fault System.

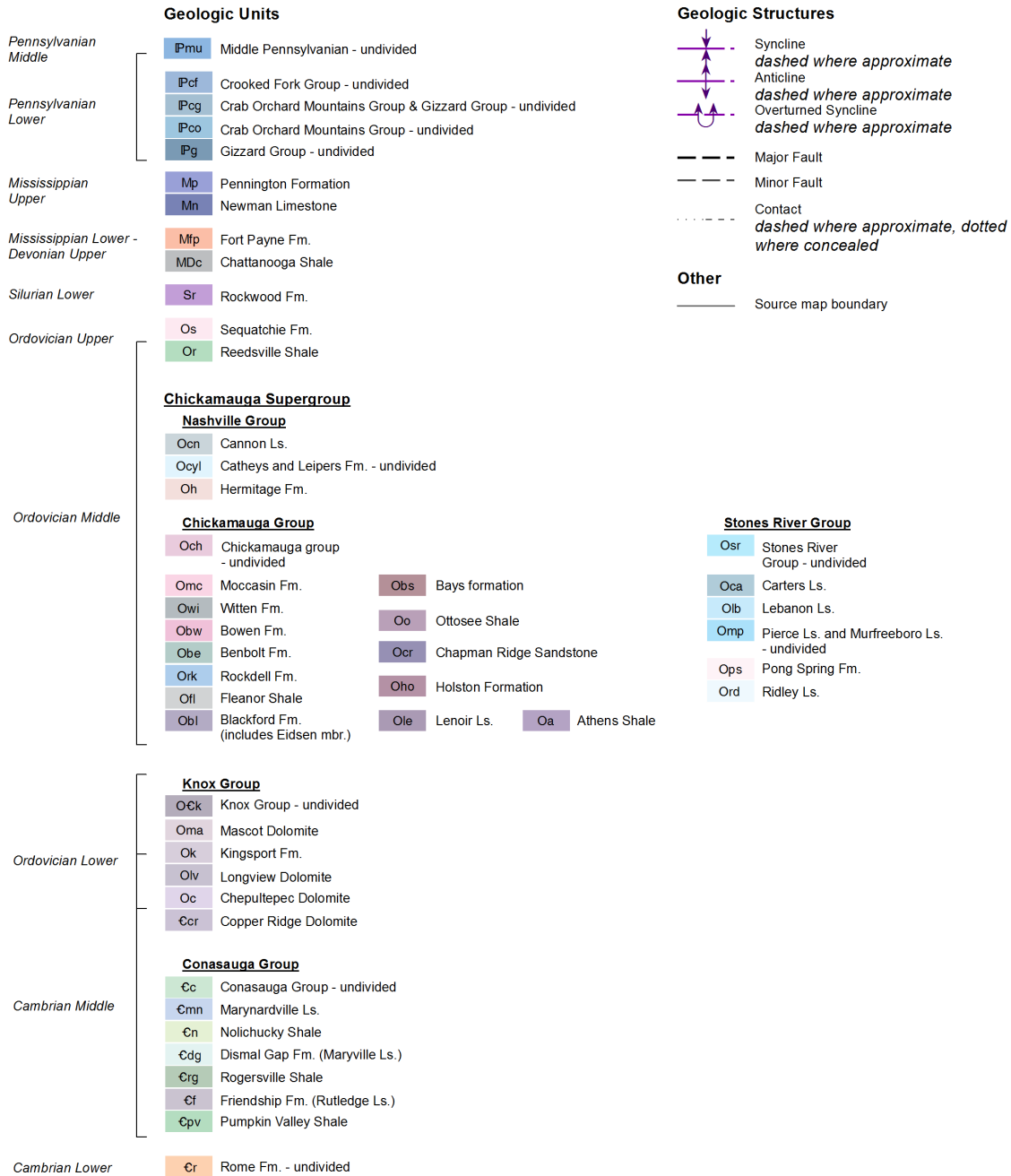
**Figure 2.5.1-12. Alleghanian Zipper Tectonics**



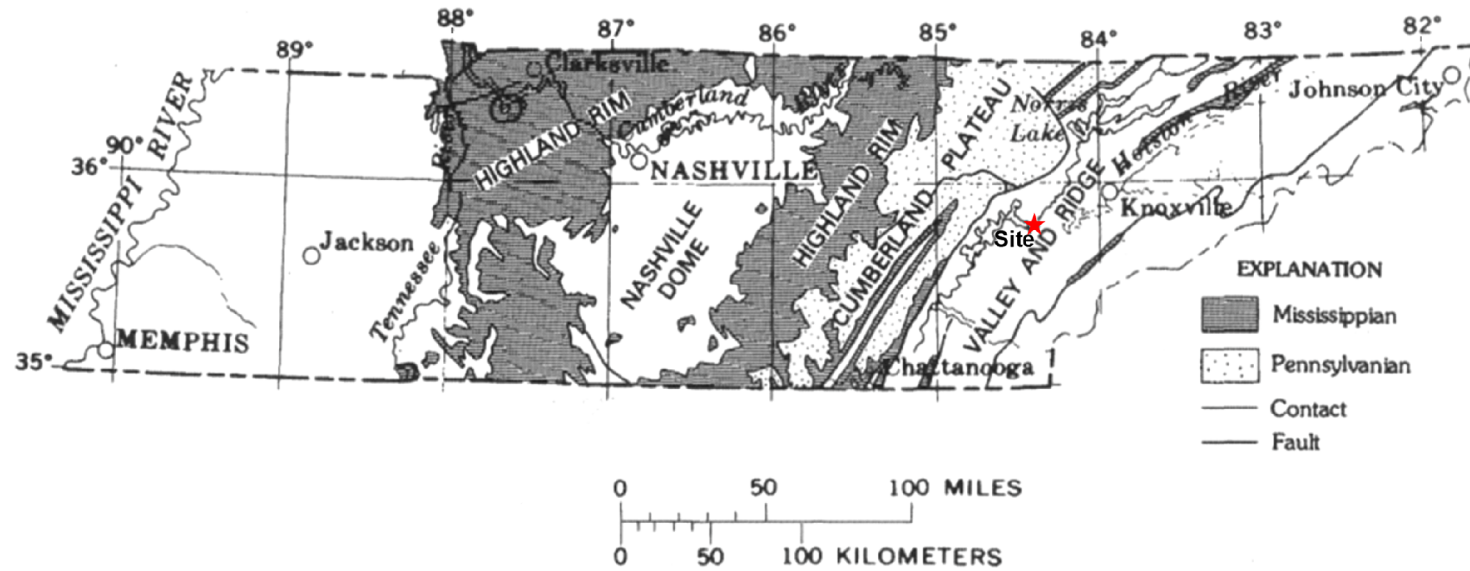
Notes:  
Distribution of Mesozoic features in the southern and central Appalachians.  
Central Atlantic Magmatic Province (CAMP) diabase dikes shown as thin green lines, with silicified faults shown as heavy orange lines.  
Dark shaded areas represent exposed Triassic rift basins.  
From [Reference 2.5.1-87](#).

**Figure 2.5.1-13. Mesozoic Features Map**

Clinch River Nuclear Site  
Early Site Permit Application  
Part 2, Site Safety Analysis Report



**Figure 2.5.1-14. Site Vicinity Stratigraphic Columns**



Note: After [Reference 2.5.1-112](#)

**Figure 2.5.1-15. The Cumberland Plateau and Interior Low Plateaus in Tennessee**

Clinch River Nuclear Site  
 Early Site Permit Application  
 Part 2, Site Safety Analysis Report

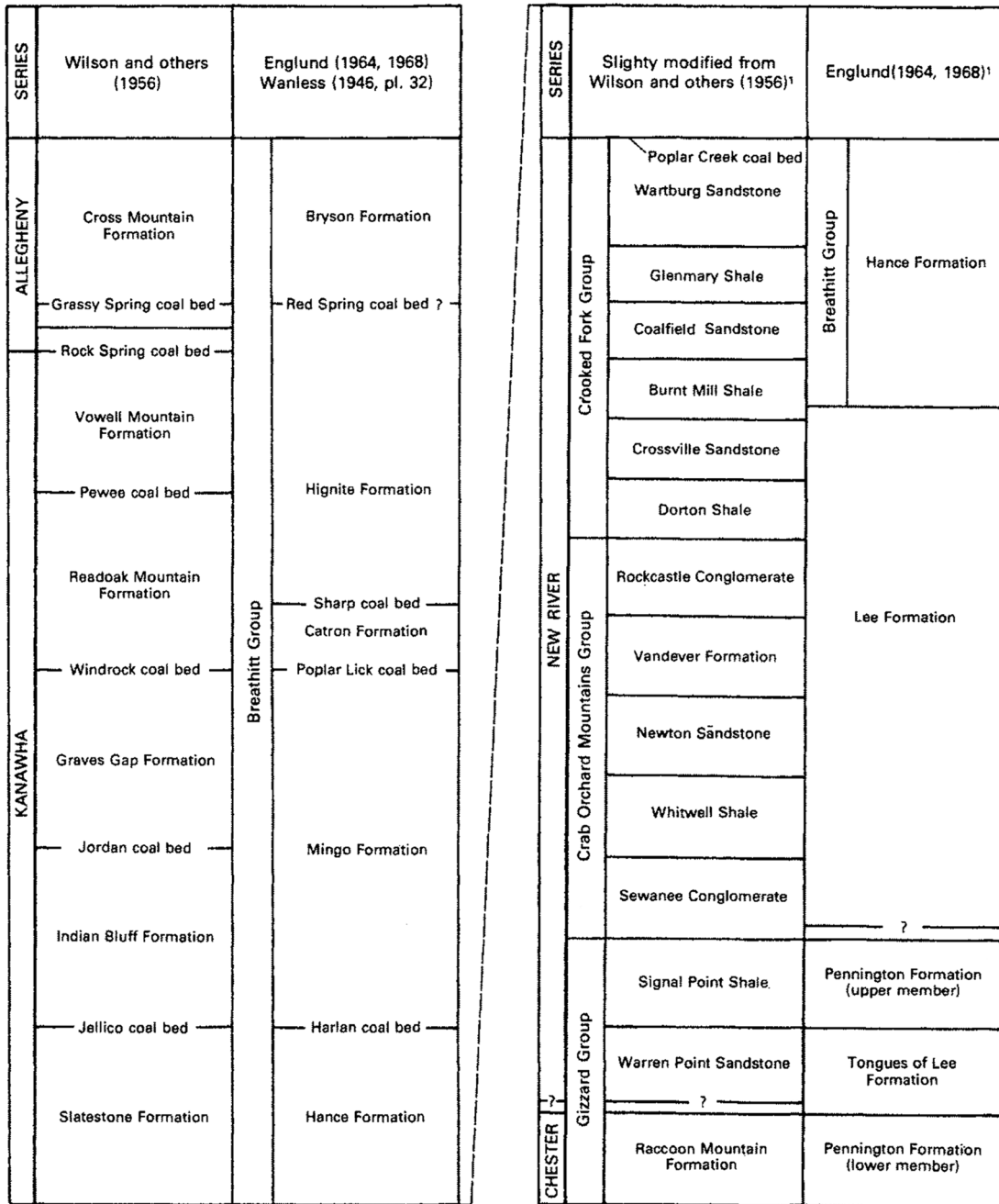
SERIES	WESTERN HIGHLAND RIM	CUMBERLAND PLATEAU AND EASTERN HIGHLAND RIM	PINE MOUNTAIN BLOCK (Englund, 1964, 1968)	NEWMAN RIDGE (Mixon and Harris, 1971)	BELT EAST OF CLINCH MOUNTAIN (Sanders, 1952, unpub. data; Hasson, 1973)	CHILHOWEE MOUNTAIN (Newman and Nelson, 1965)
CHESTERIAN		Gizzard Group (lower part)	Pennington Foramtion	Pennington Formation	Pennington Formation	
		Pennington Formation	Newman Limestone	Newman Limestone	Cove Creek Formation	
		Bangor Limestone			Fido Sandstone	
		Hartselle Sandstone			Fisher Creek Limestone	
		Gilliam Creek Limestone				
MERAMECIAN	St. Genevieve Limestone	Monteagle Limestone			Clifton Creek Limestone	
	St. Louis Limestone	St. Louis Limestone			Snowflake Formation	
	Warsaw Limestone	Warsaw Limestone			Laurel Branch Limestone	
					Pressmens Home Formation	Greasy Cove Formation
					Maccrady Formation	
OSAGEAN	Fort Payne Formation	Fort Payne Formation	Fort Payne Chert	Grainger Formation	Grainger Formation	Grainger Formation
KINDERHOOKIAN	Maury Shale	Maury Shale	Maury Shale			
				Chattanooga Shale (upper part)	Chattanooga Shale (upper part)	Chattanooga Shale (upper part)

Notes:  
 From Reference 2.5.1-112

**Figure 2.5.1-16. Mississippian Stratigraphic Units in Tennessee**



Clinch River Nuclear Site  
Early Site Permit Application  
Part 2, Site Safety Analysis Report

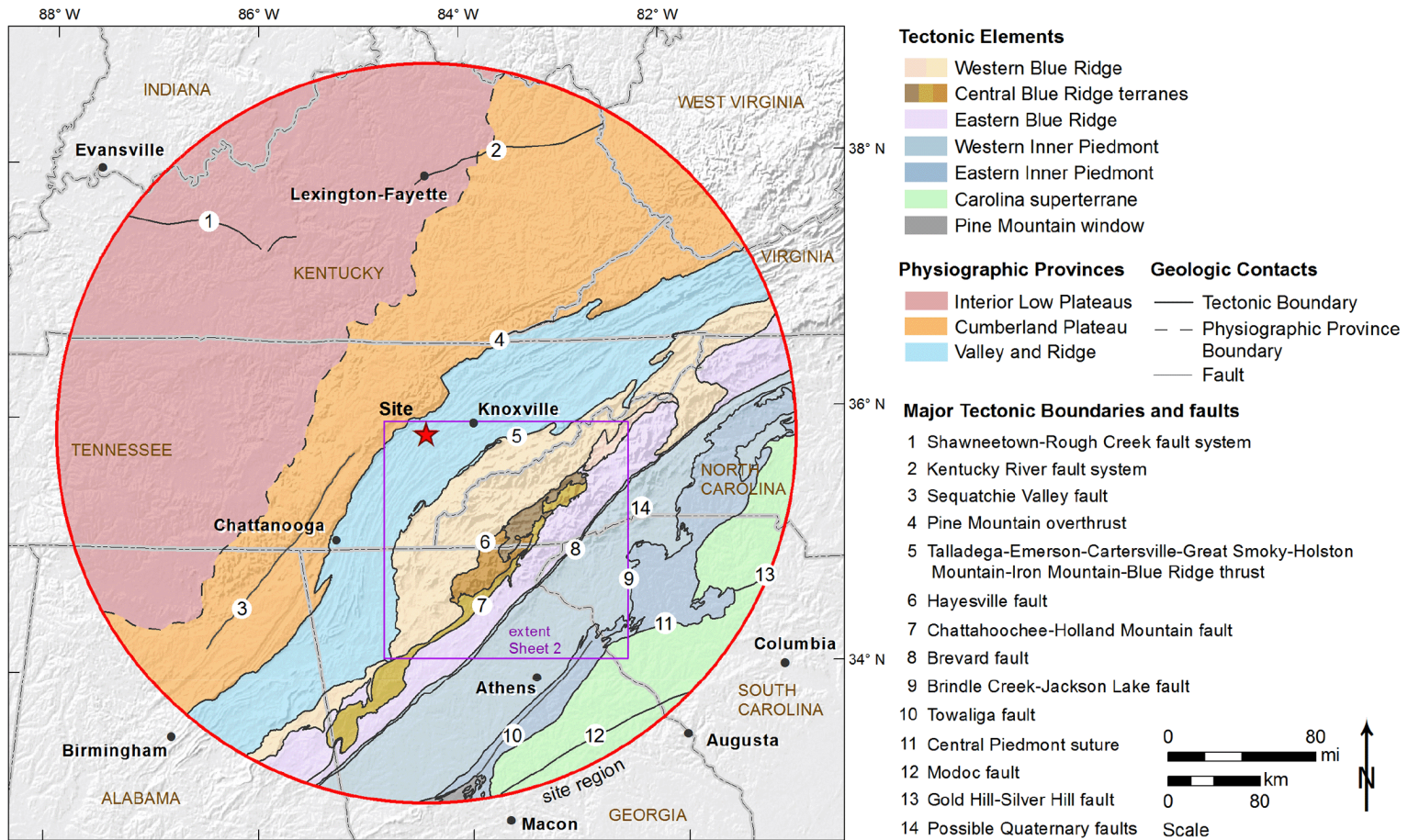


<sup>1</sup>Queried double lines show opinions concerning the Mississippian - Pennsylvanian boundary.

Note: Reference 2.5.1-112

**Figure 2.5.1-17. Pennsylvanian System in Tennessee**

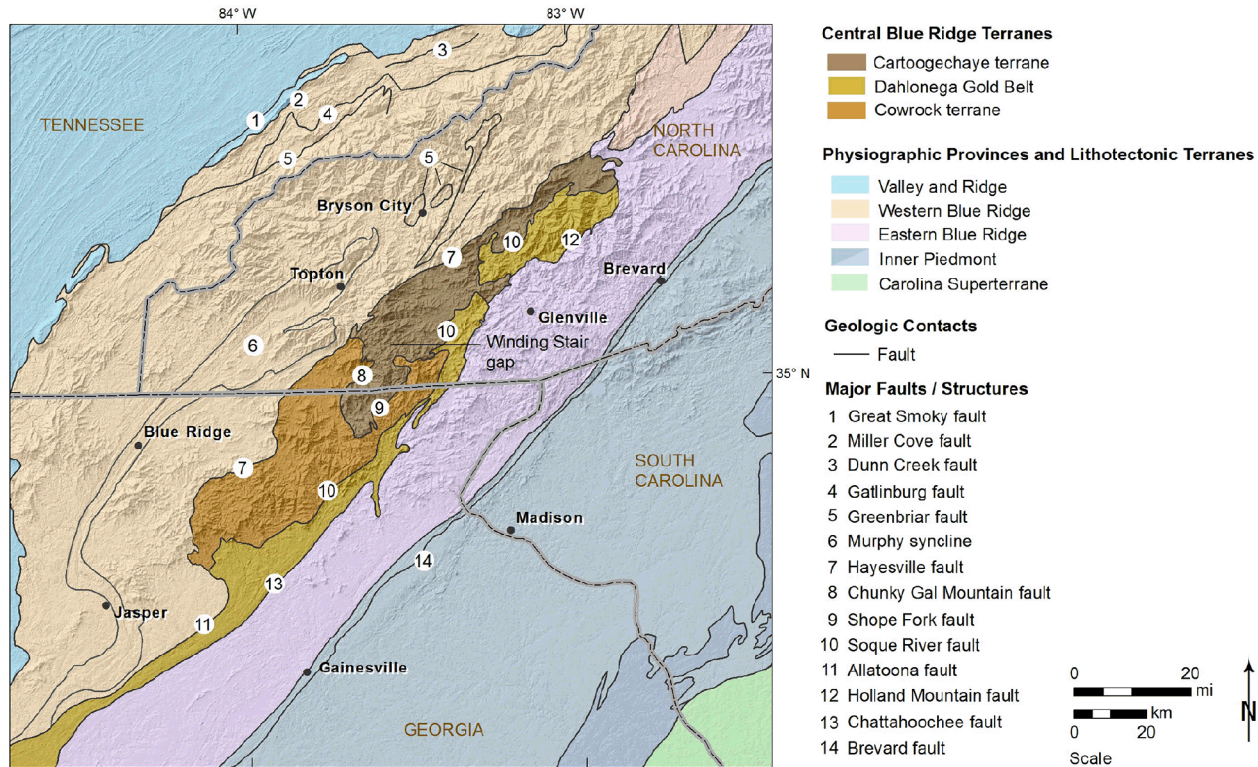
Clinch River Nuclear Site  
Early Site Permit Application  
Part 2, Site Safety Analysis Report



Notes:  
Lithotectonic terranes, provinces, and major tectonic boundaries (after [References 2.5.1-24, 2.5.1-34, and 2.5.1-137](#))

**Figure 2.5.1-18. (Sheet 1 of 2) Lithotectonic Terrane Map**

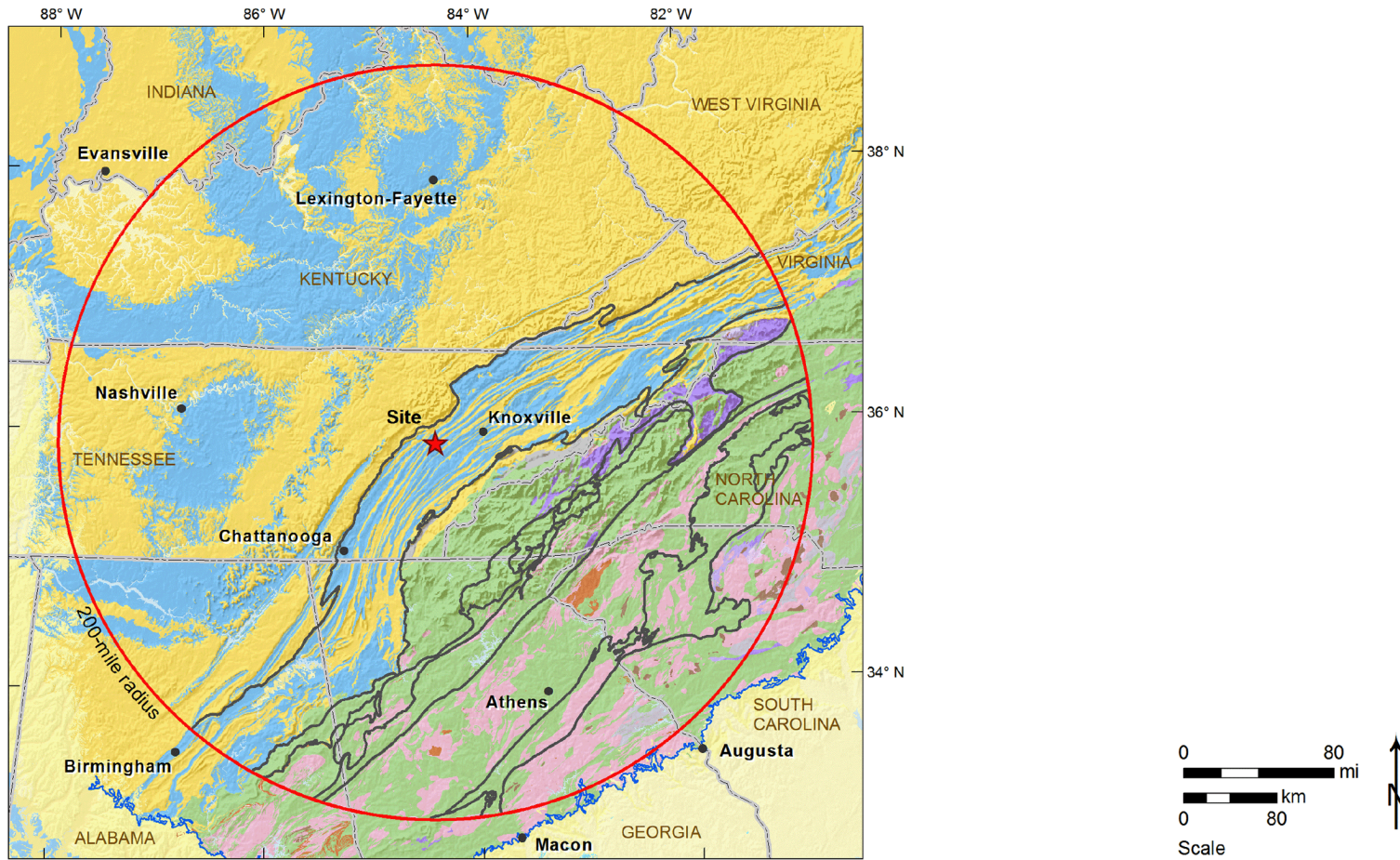
Clinch River Nuclear Site  
Early Site Permit Application  
Part 2, Site Safety Analysis Report



Note:  
Simplified tectonic map of the Central Blue Ridge terranes.

**Figure 2.5.1-18. (Sheet 2 of 2) Lithotectonic Terrane Map—Blue Ridge Zoom**

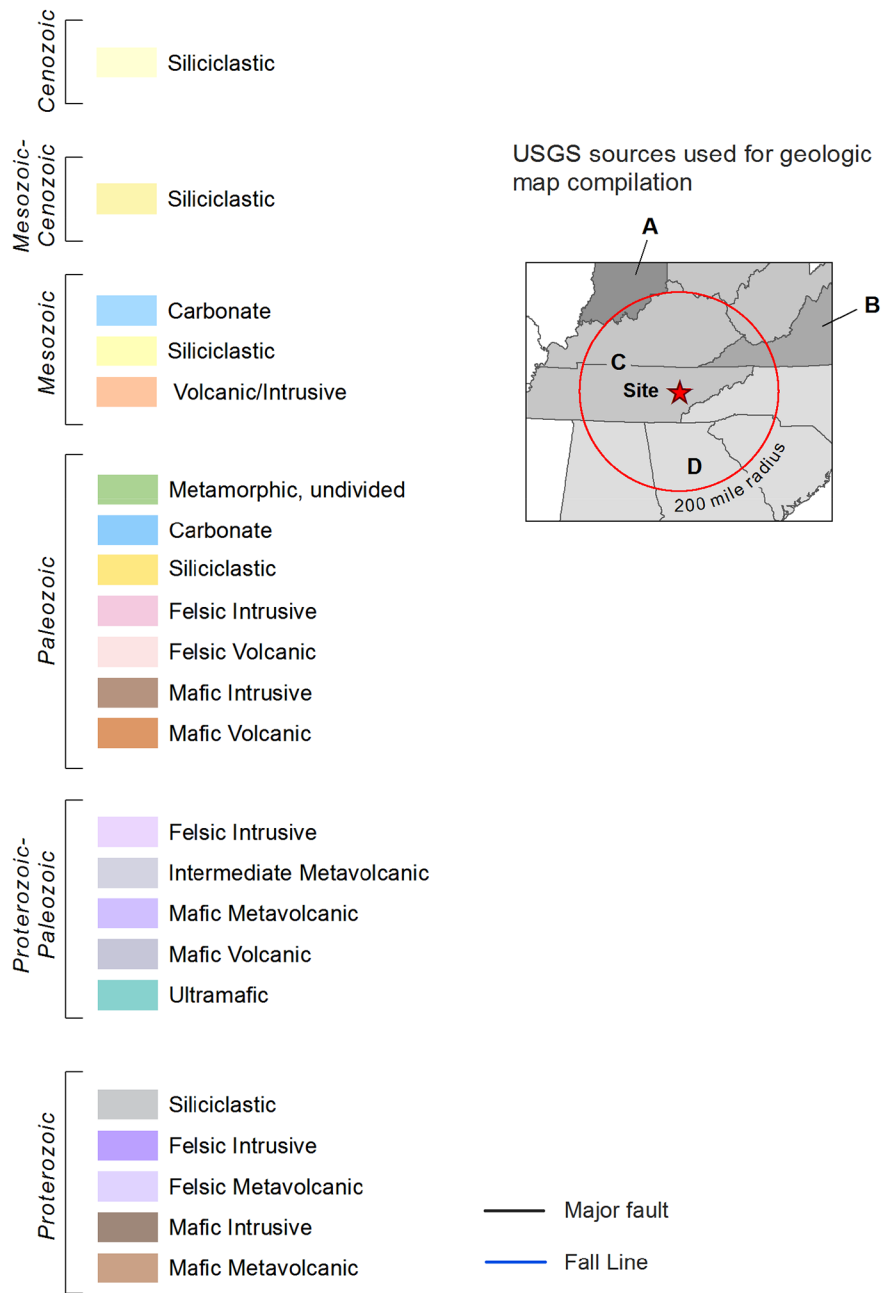
Clinch River Nuclear Site  
Early Site Permit Application  
Part 2, Site Safety Analysis Report



Note:  
USGS sources for geologic map: A - OFR-04-1355, Reference 2.5.1-116; B - OFR-05-1325, Reference 2.5.1-115; C - OFR-05-1323, Reference 2.5.1-114; D - OFR-05-1324, Reference 2.5.1-117. Major faults from References 2.5.1-24 and 2.5.1-34. Fall Line from Reference 2.5.1-20.

Figure 2.5.1-19. (Sheet 1 of 2) Site Region Geologic Map

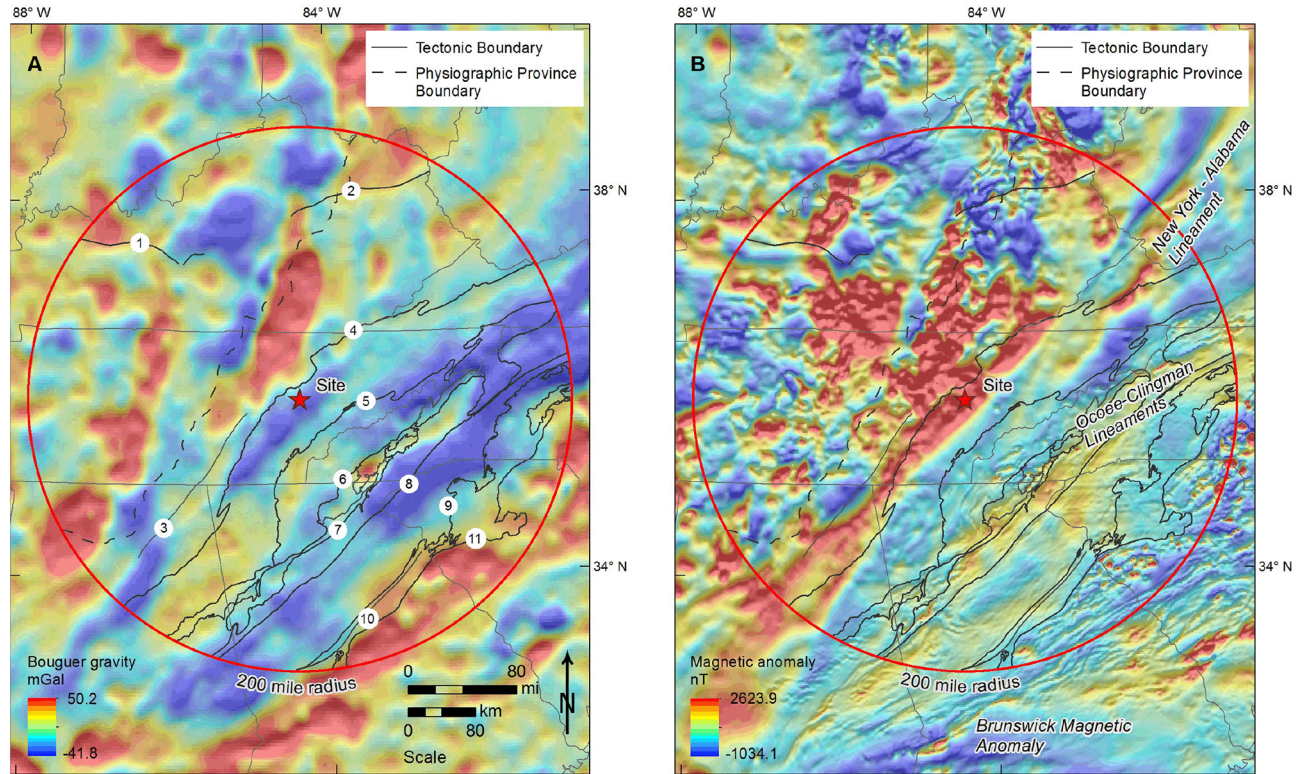
### Aggregated Geologic Units



Note:  
 USGS sources for geologic map: A - OFR-04-1355, Reference 2.5.1-116; B - OFR-05-1325, Reference 2.5.1-115;  
 C - OFR-05-1323, Reference 2.5.1-114; D - OFR-05-1324, Reference 2.5.1-117. Major faults from  
 References 2.5.1-24 and 2.5.1-34. Fall Line from Reference 2.5.1-20.

**Figure 2.5.1-19. (Sheet 2 of 2) Site Region Geologic Map**

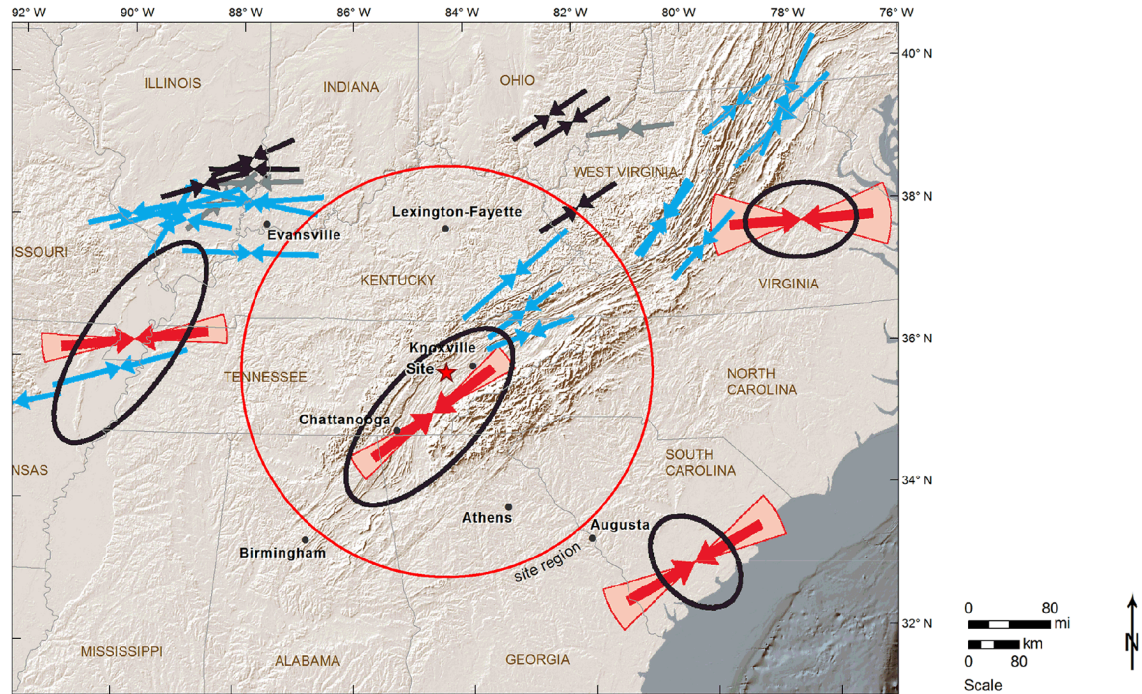
Clinch River Nuclear Site  
Early Site Permit Application  
Part 2, Site Safety Analysis Report



Notes:  
Gravity anomaly (A) and aeromagnetic residual data (B) from CEUS SSC (Reference 2.5.1-190).  
See Figure 2.5.1-18, Sheet 1 for numbered fault references.

Figure 2.5.1-20. Aeromagnetic and Gravity Maps

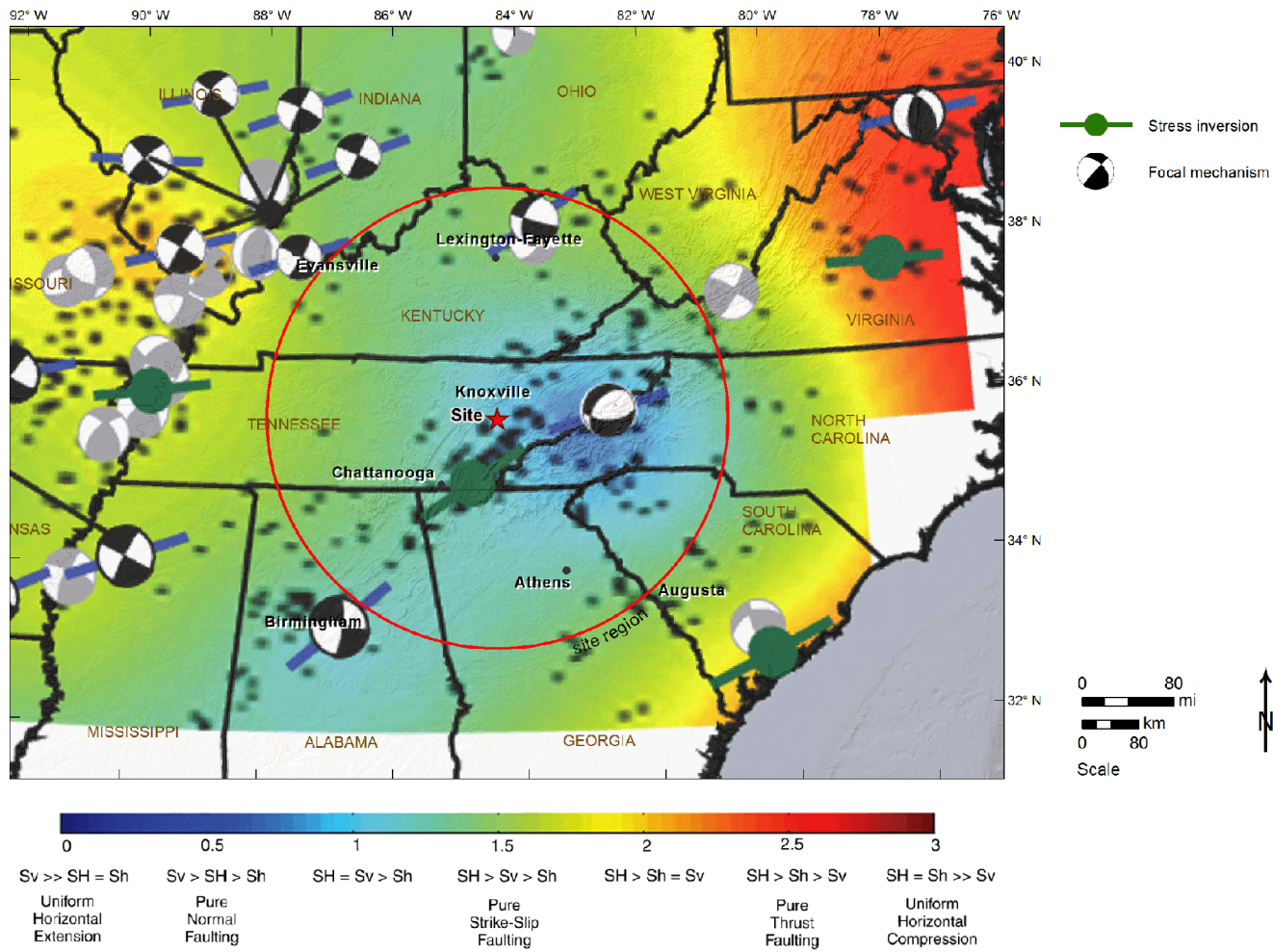
Clinch River Nuclear Site  
Early Site Permit Application  
Part 2, Site Safety Analysis Report



Notes:  
Map of current stresses in the central and eastern U.S. (after Reference 2.5.1-185).  
Black and gray arrows – orientation from borehole observations;  
Blue arrows – borehole observations used in calculating the regional average within 250 km (155 mi) of the seismic zones (solid ellipses);  
Red arrows and angular sectors – orientation from focal mechanism inversion.

**Figure 2.5.1-21. (Sheet 1 of 2) Current Compressive Stress—Eastern United States**

Clinch River Nuclear Site  
 Early Site Permit Application  
 Part 2, Site Safety Analysis Report



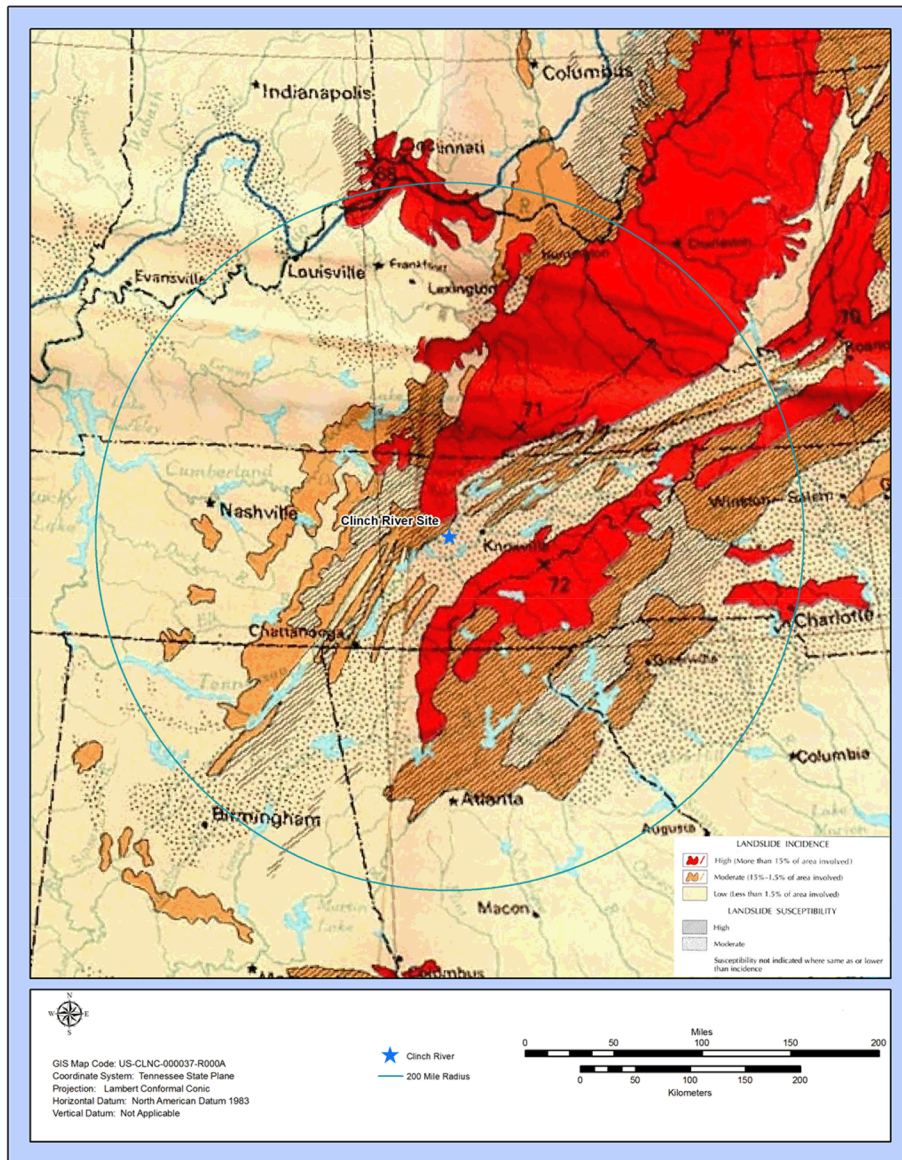
Notes:  
 Gray focal mechanisms from Reference 2.5.1-183; black focal mechanisms from Reference 2.5.1-306.  
 SH – maximum horizontal stress; Sh – minimum horizontal stress; Sv – vertical stress.

Source: Reference 2.5.1-306

Figure 2.5.1-21. (Sheet 2 of 2) Regional Stress Map from Hurd and Zoback



Clinch River Nuclear Site  
Early Site Permit Application  
Part 2, Site Safety Analysis Report



Note: Modified from Reference 2.5.1-202

Figure 2.5.1-22. Landslide Hazard Map for the Clinch River Nuclear Site Region

Clinch River Nuclear Site  
Early Site Permit Application  
Part 2, Site Safety Analysis Report

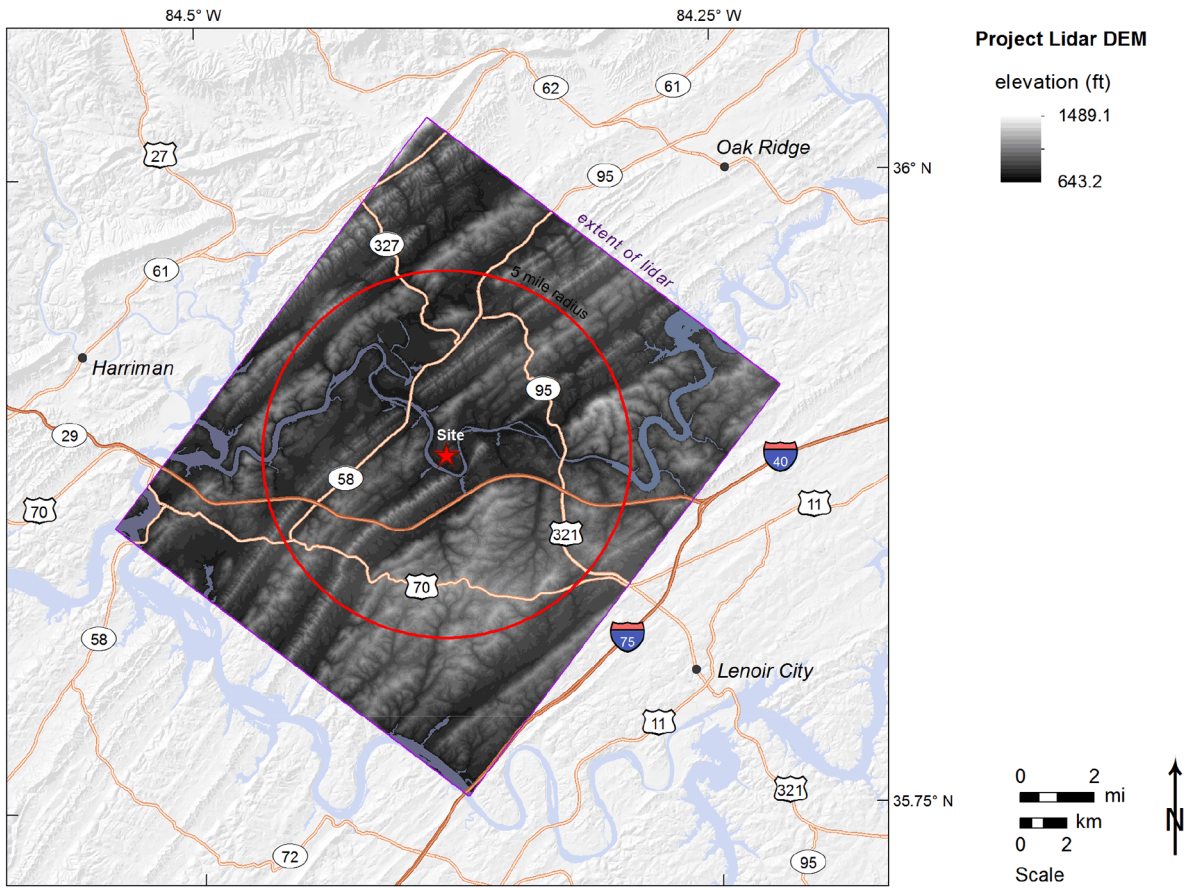
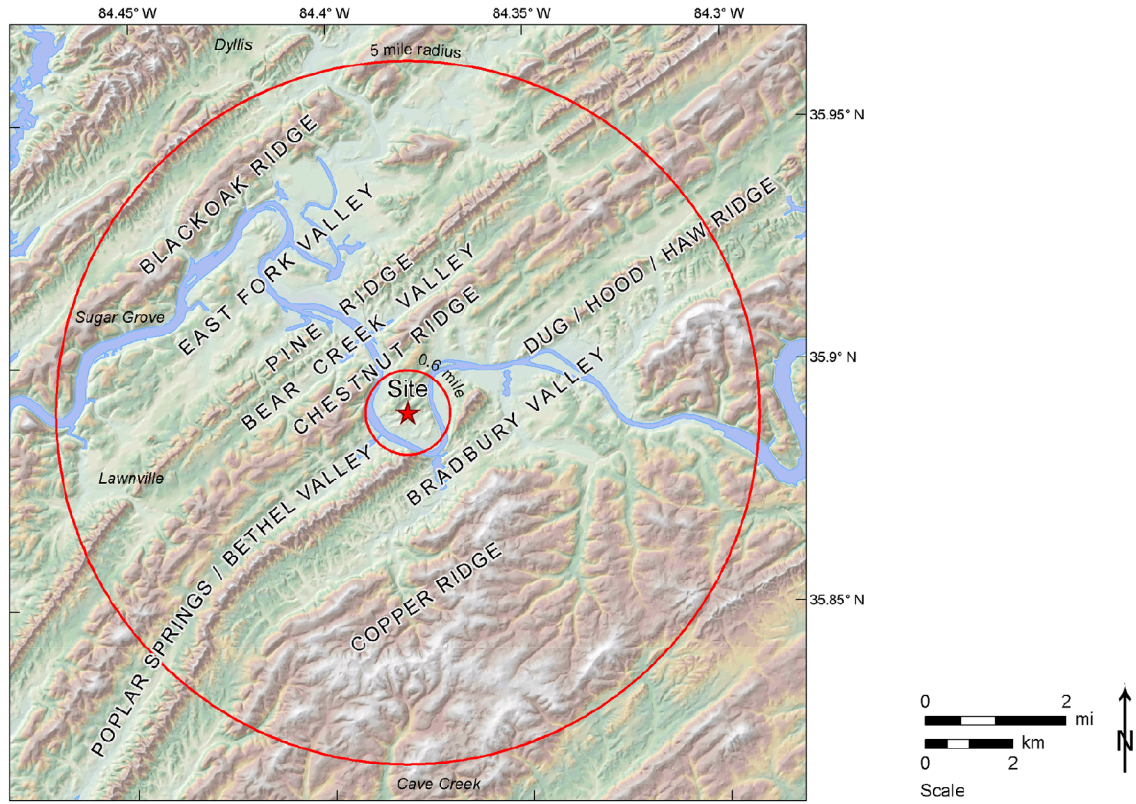


Figure 2.5.1-23. LiDAR Digital Elevation Model Coverage



Note: Local geographic nomenclature from Lemiszki (Reference 2.5.1-215)

**Figure 2.5.1-24. Local Physiography with Local Nomenclature for Valleys and Ridges**

Clinch River Nuclear Site  
 Early Site Permit Application  
 Part 2, Site Safety Analysis Report

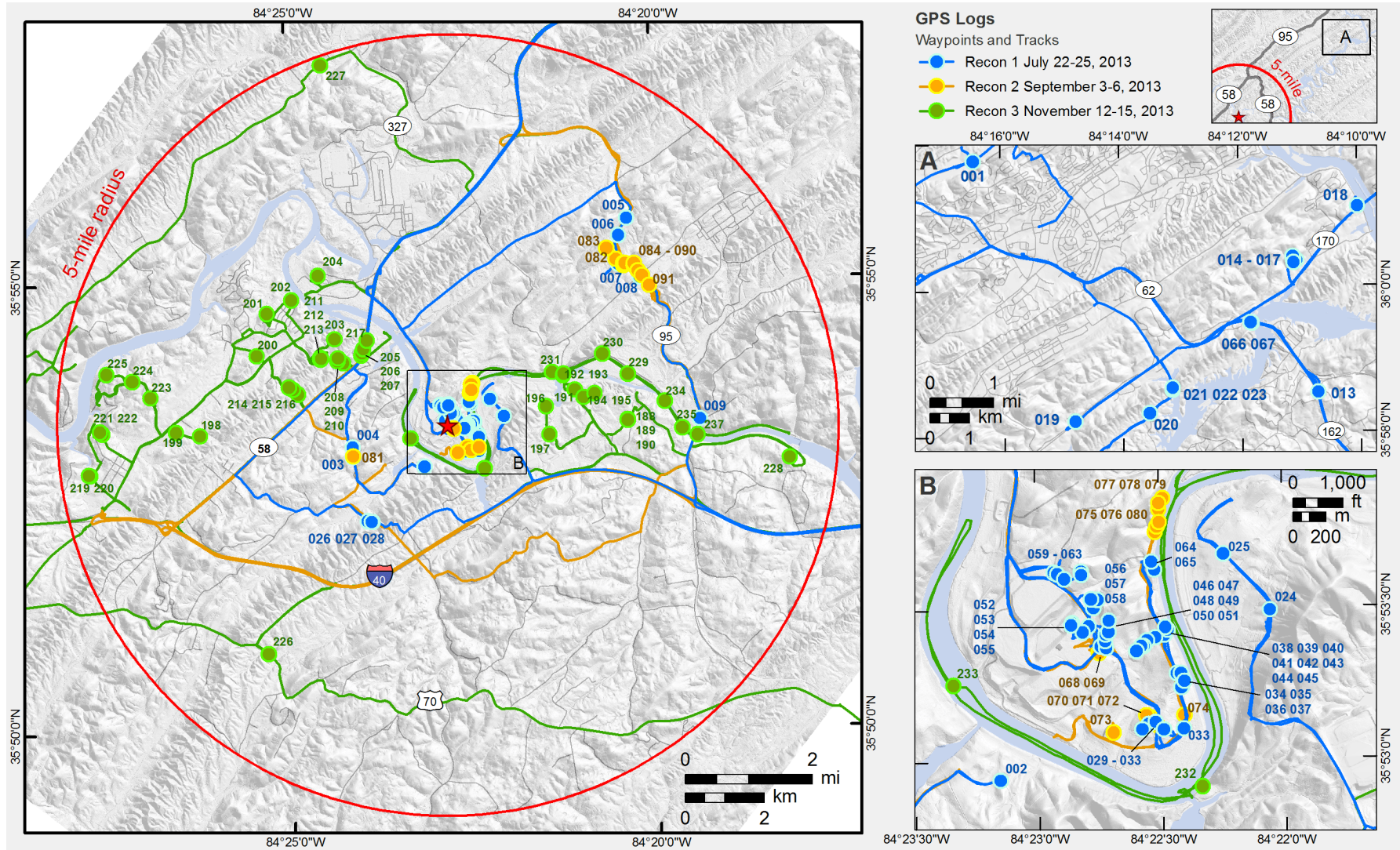


Figure 2.5.1-25. Geologic Field Reconnaissance Waypoint Locations

Clinch River Nuclear Site  
 Early Site Permit Application  
 Part 2, Site Safety Analysis Report

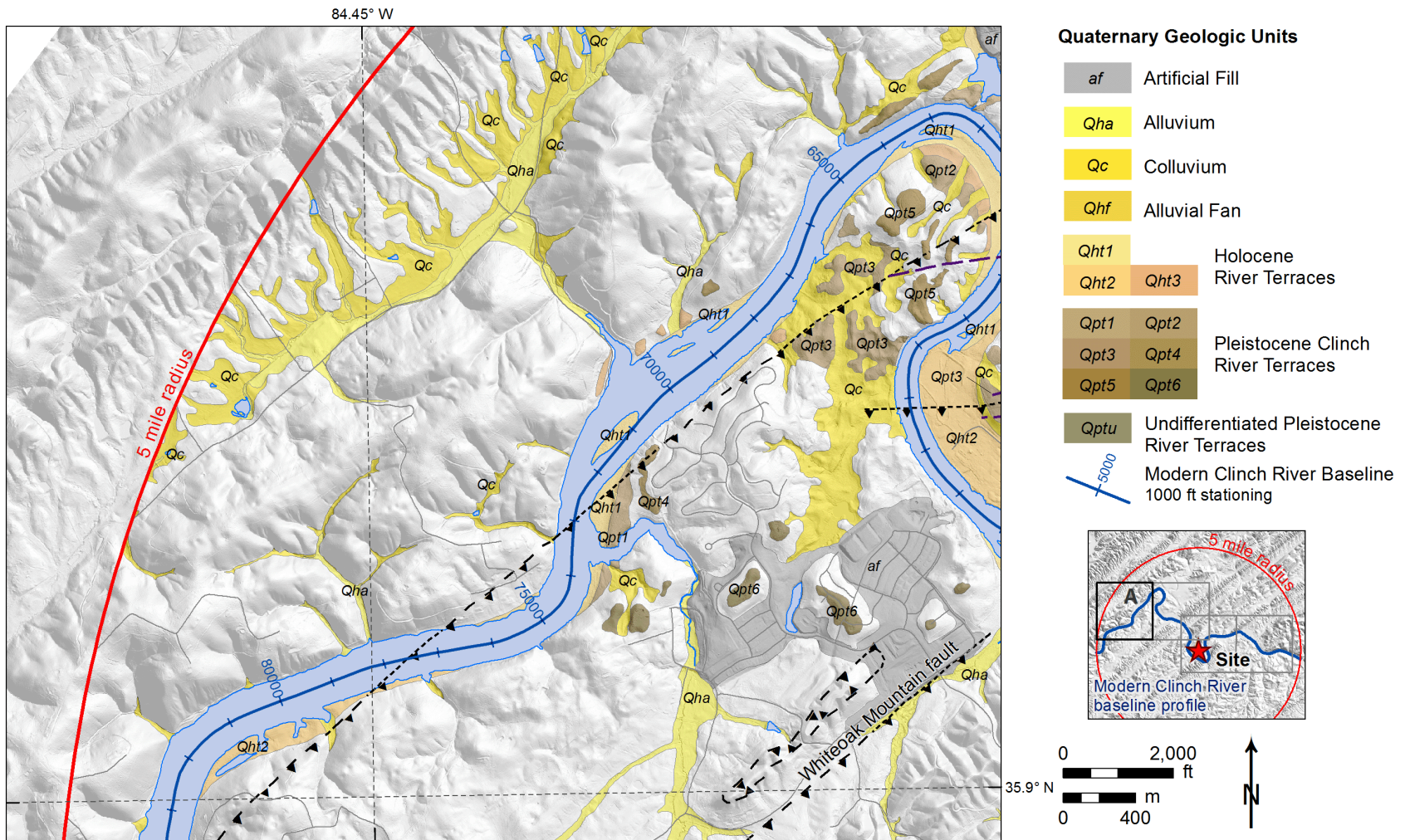


Figure 2.5.1-26. (Sheet 1 of 6) Quaternary Terrace Map Adjacent to the Clinch River Arm of the Watts Bar Reservoir Within the Clinch River Nuclear Site Area, Location A

Clinch River Nuclear Site  
 Early Site Permit Application  
 Part 2, Site Safety Analysis Report

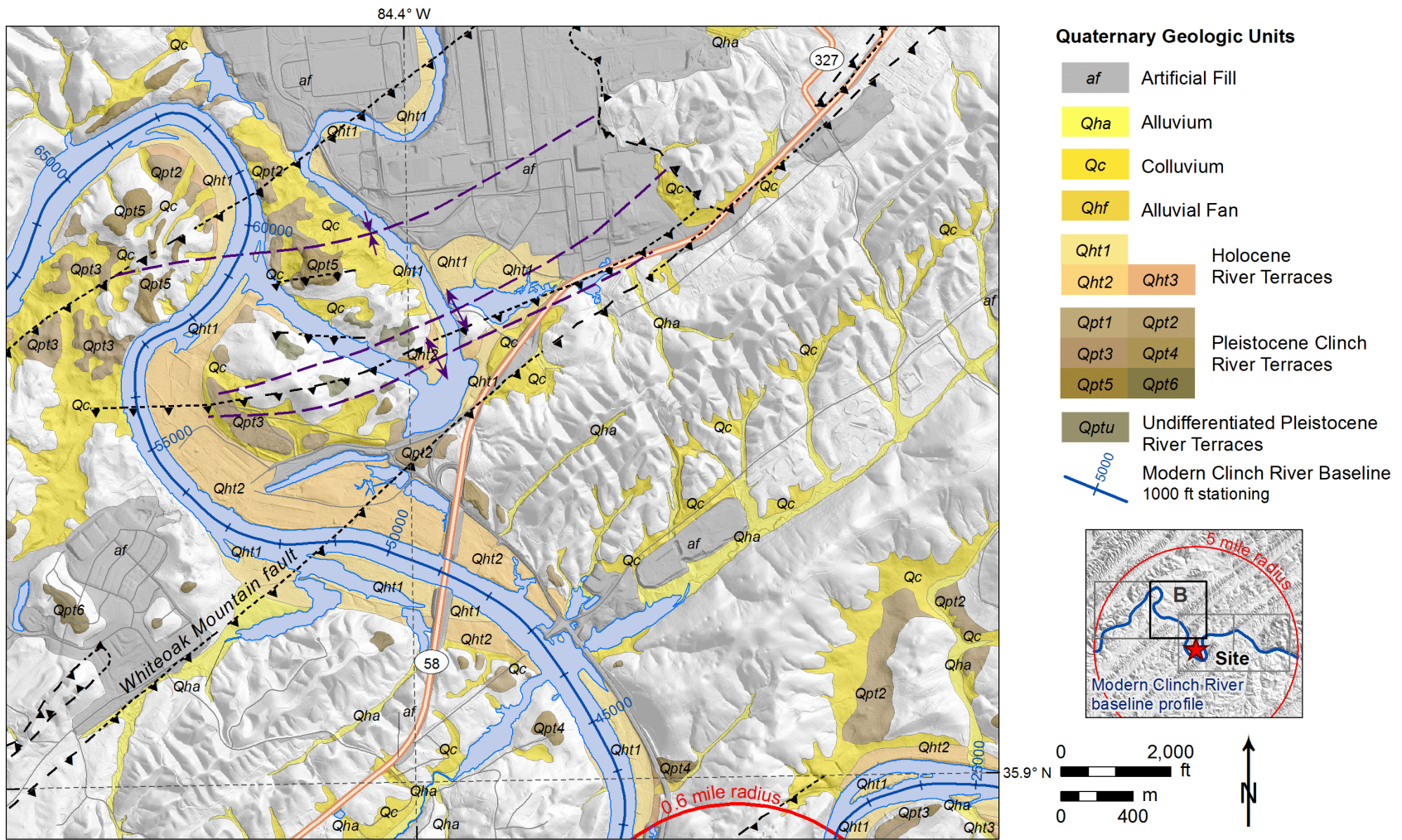


Figure 2.5.1-26. (Sheet 2 of 6) Quaternary Terrace Map Adjacent to the Clinch River Arm of the Watts Bar Reservoir Within the Clinch River Nuclear Site Area, Location B

Clinch River Nuclear Site  
 Early Site Permit Application  
 Part 2, Site Safety Analysis Report

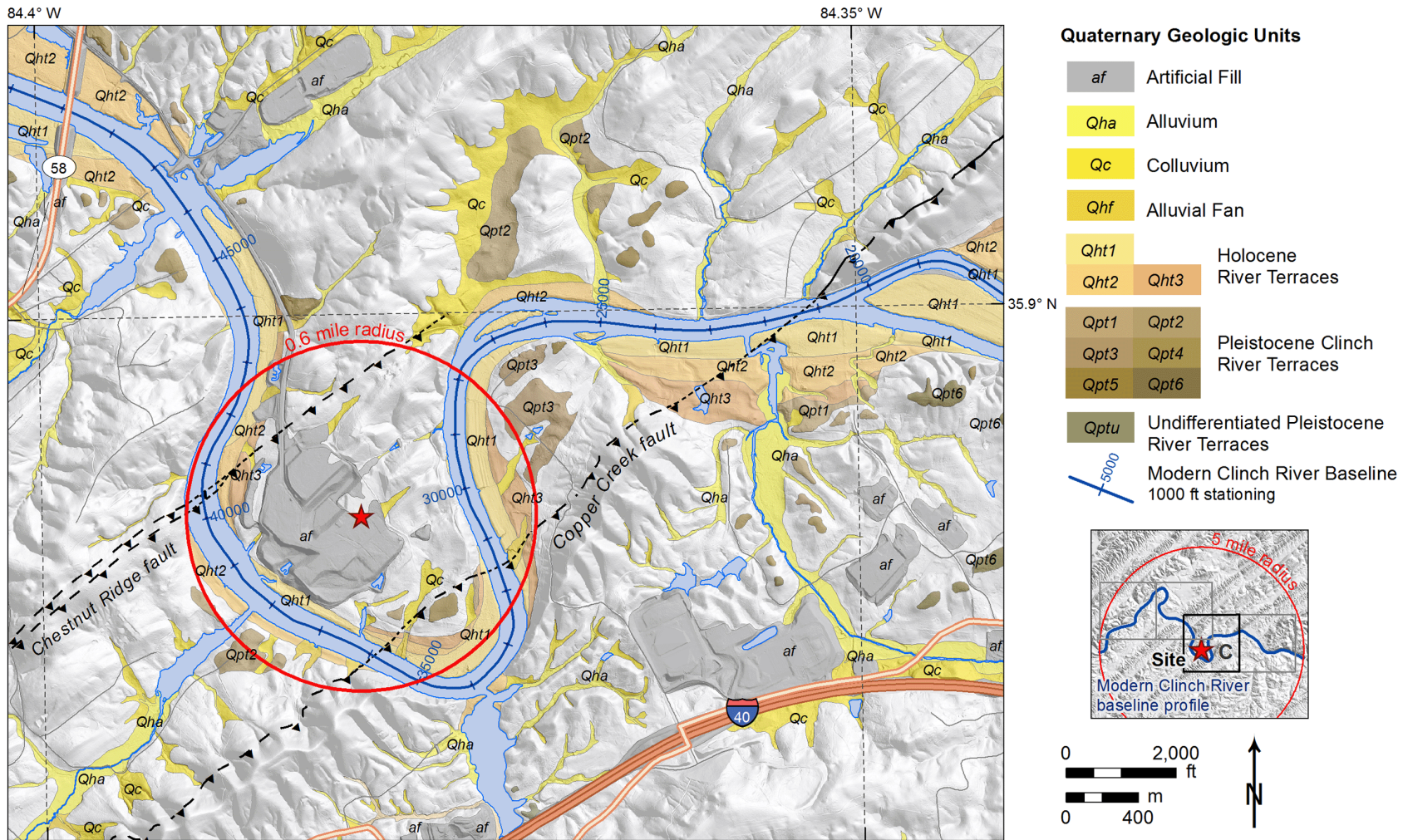
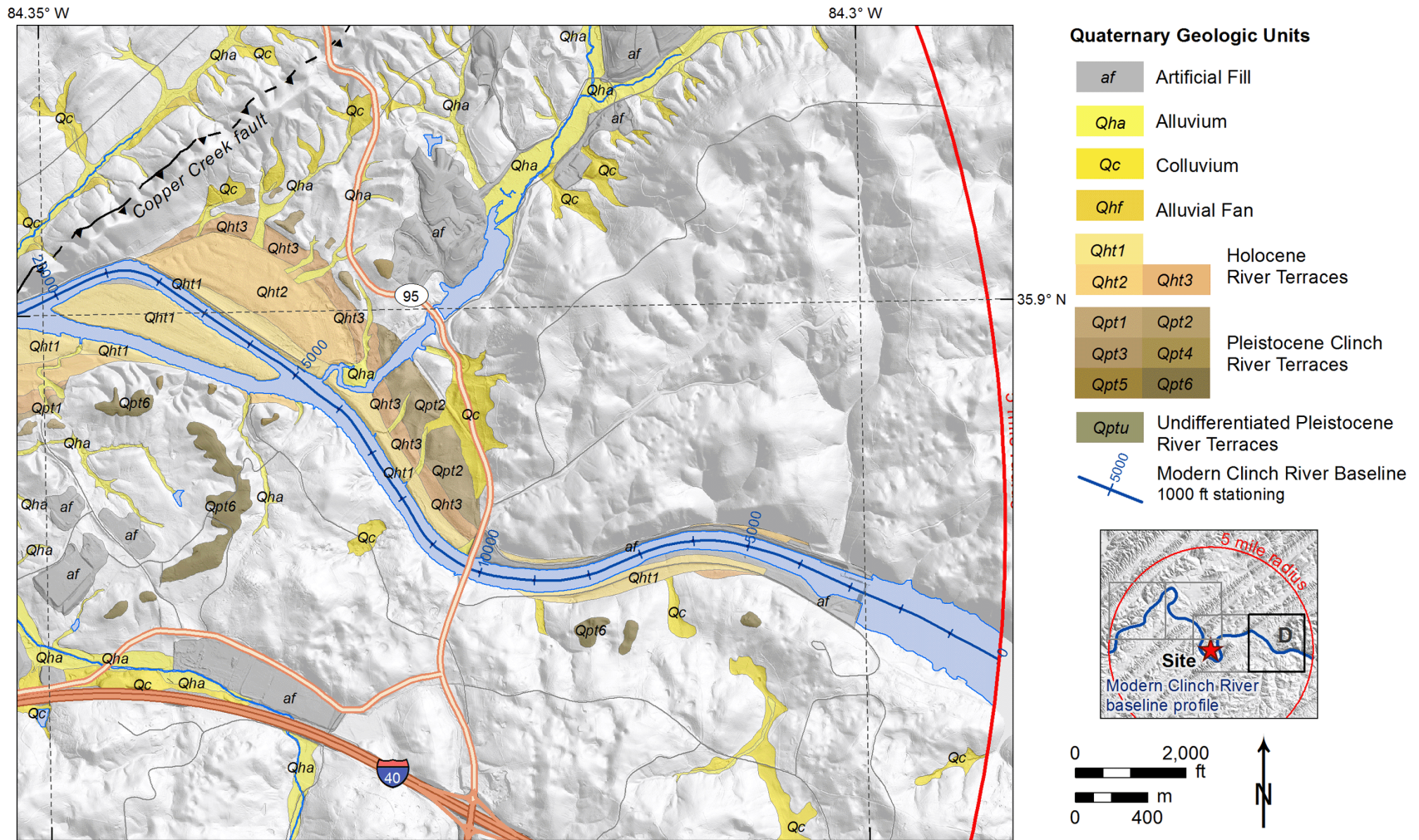


Figure 2.5.1-26. (Sheet 3 of 6) Quaternary Terrace Map Adjacent to the Clinch River Arm of the Watts Bar Reservoir Within the Clinch River Nuclear Site Area, Location C

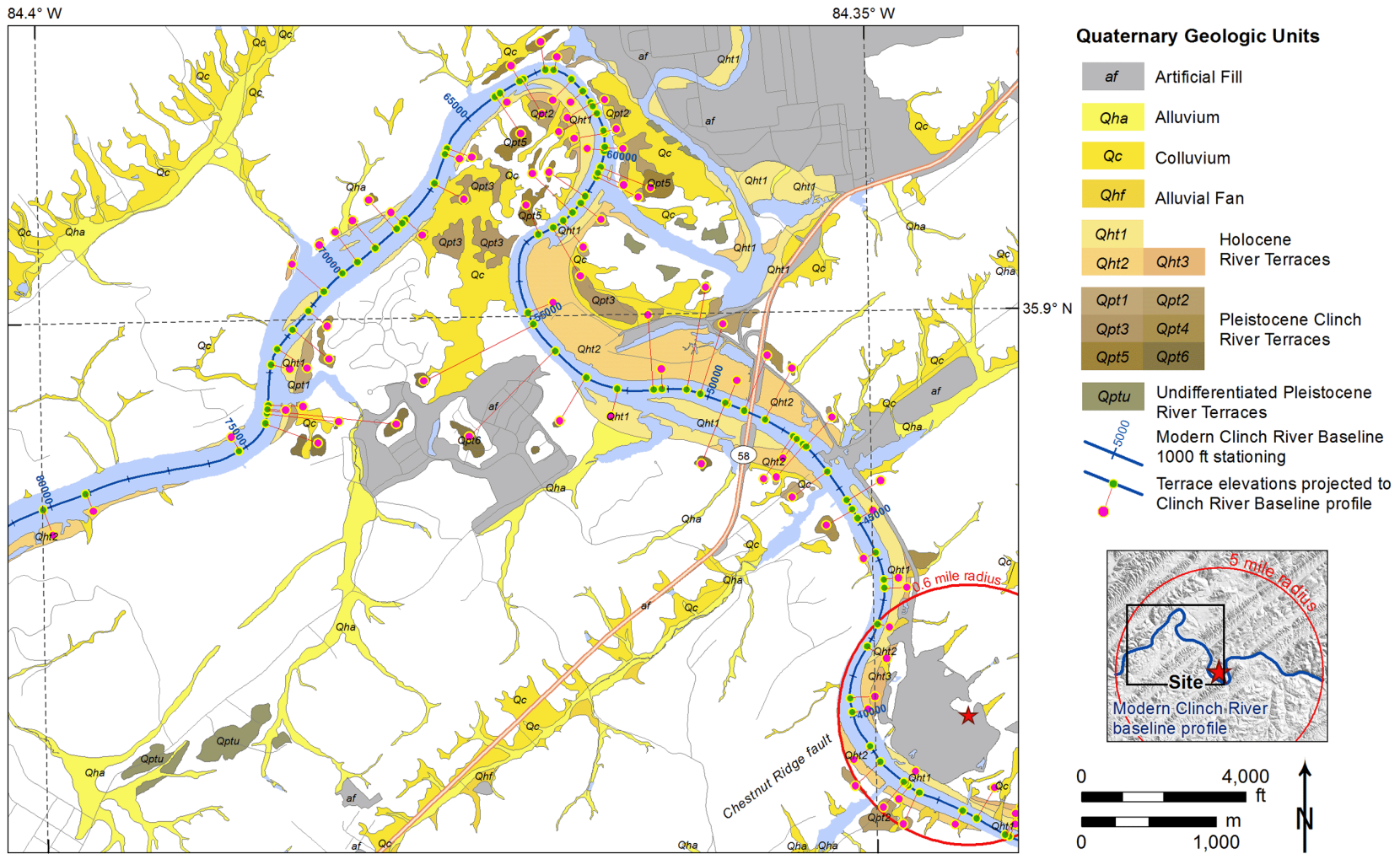
Clinch River Nuclear Site  
 Early Site Permit Application  
 Part 2, Site Safety Analysis Report



**Figure 2.5.1-26. (Sheet 4 of 6) Quaternary Terrace Map Adjacent to the Clinch River Arm of the Watts Bar Reservoir Within the Clinch River Nuclear Site Area, Location D**



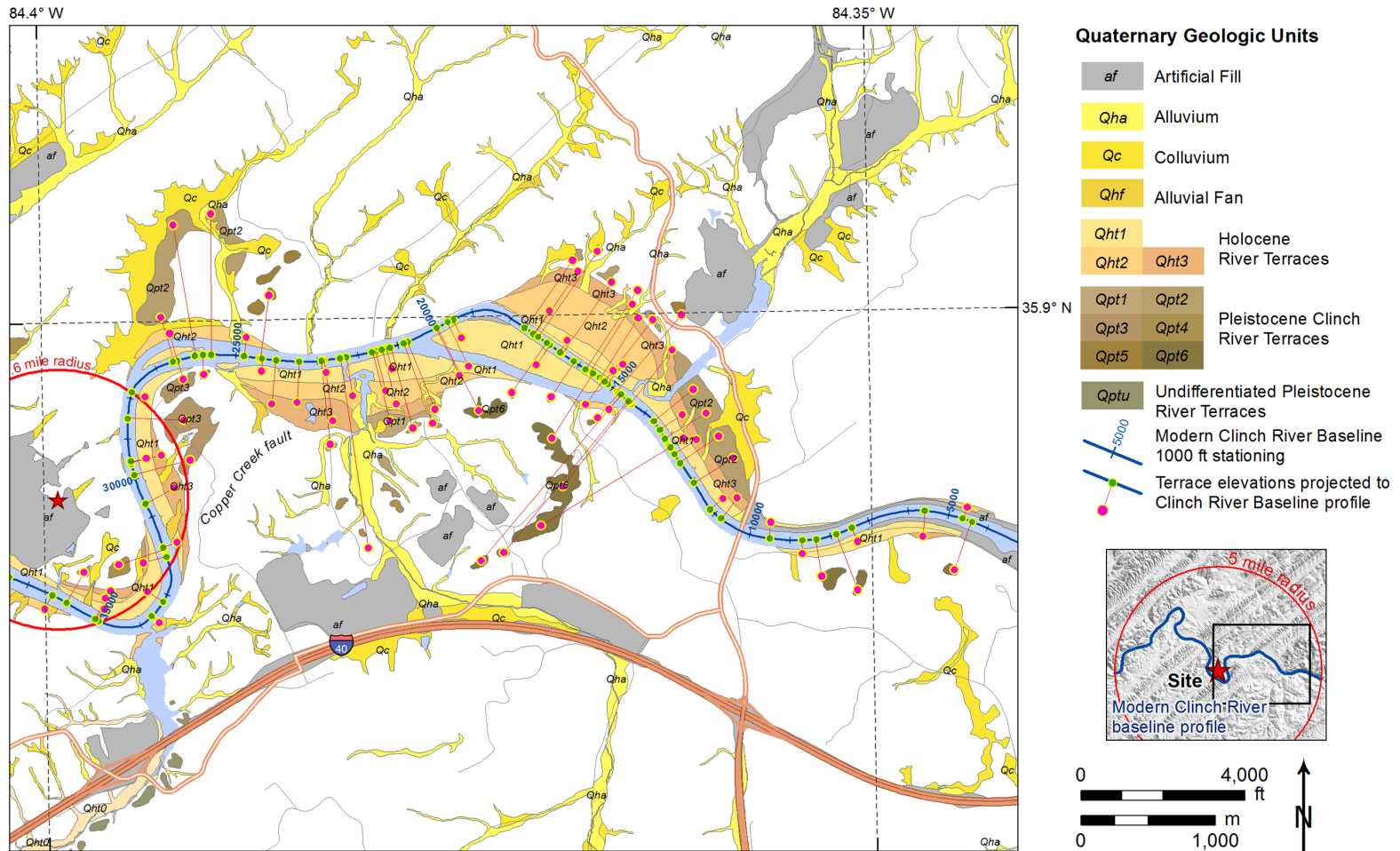
Clinch River Nuclear Site  
Early Site Permit Application  
Part 2, Site Safety Analysis Report



Notes:  
See Figure 2.5.3-4 for Longitudinal Profiles of Quaternary Terraces along the Clinch River.

**Figure 2.5.1-26. (Sheet 5 of 6) Quaternary Terrace Projections to the Clinch River for creation of Longitudinal Profile**

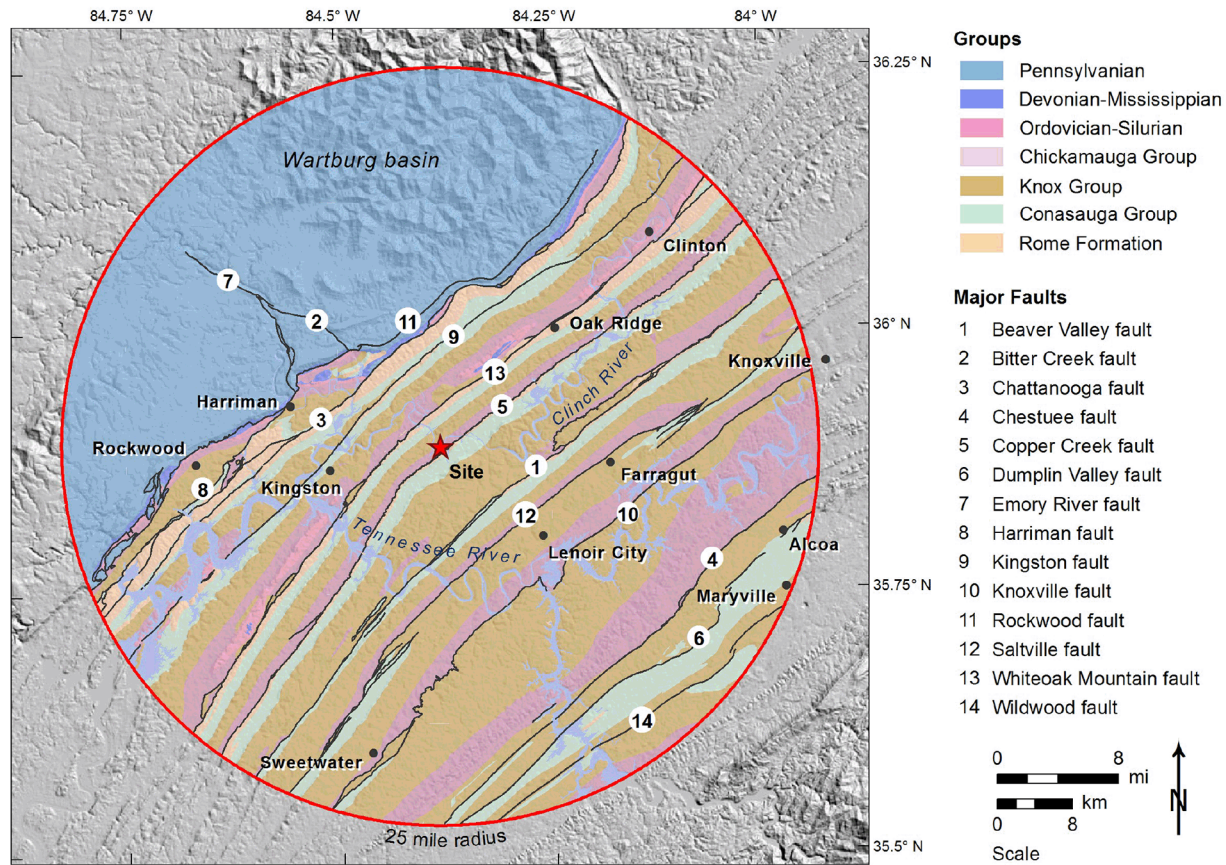
Clinch River Nuclear Site  
Early Site Permit Application  
Part 2, Site Safety Analysis Report



Notes:  
See Figure 2.5.3-4 for Longitudinal Profiles of Quaternary Terraces along the Clinch River.

**Figure 2.5.1-26. (Sheet 6 of 6) Quaternary Terrace Projections to the Clinch River for creation of Longitudinal Profile**

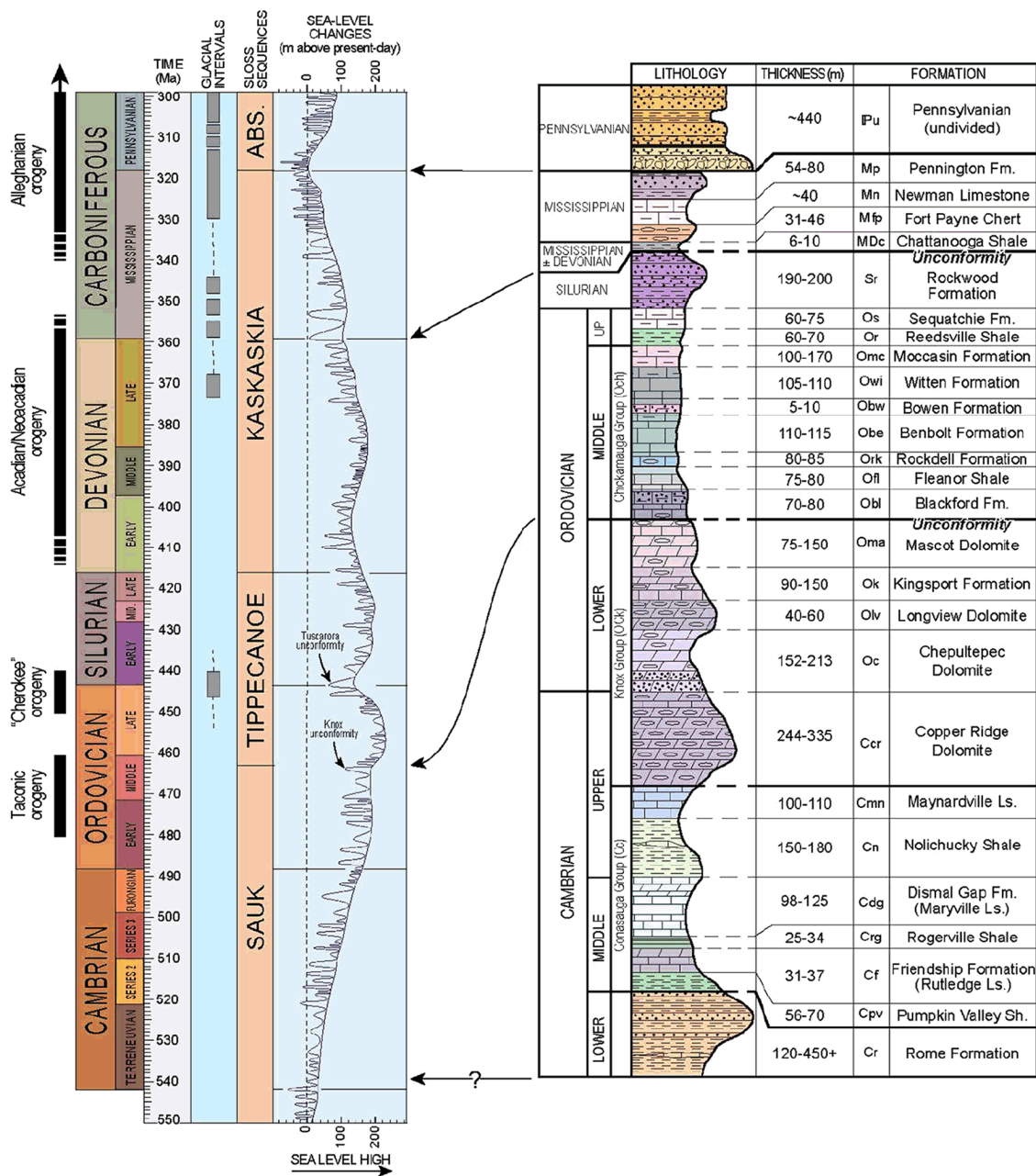
Clinch River Nuclear Site  
 Early Site Permit Application  
 Part 2, Site Safety Analysis Report



Note: Simplified geologic map of the Clinch River Nuclear site vicinity.

**Figure 2.5.1-27. Simplified Site Vicinity Geologic Map**

Clinch River Nuclear Site  
Early Site Permit Application  
Part 2, Site Safety Analysis Report



Notes:  
Generalized stratigraphic column of the geology of the CRN site vicinity (right) with Paleozoic sea level curves, Reference 2.5.1-49 cratonic sequences, glacial intervals, and tectonic events (left; modified from Reference 2.5.1-206) that correspond to the time interval represented by the stratigraphic section (modified from Reference 2.5.1-9). ABS-Absaroka

**Figure 2.5.1-28. Stratigraphic Column with Sea Level Curve**

Clinch River Nuclear Site  
Early Site Permit Application  
Part 2, Site Safety Analysis Report

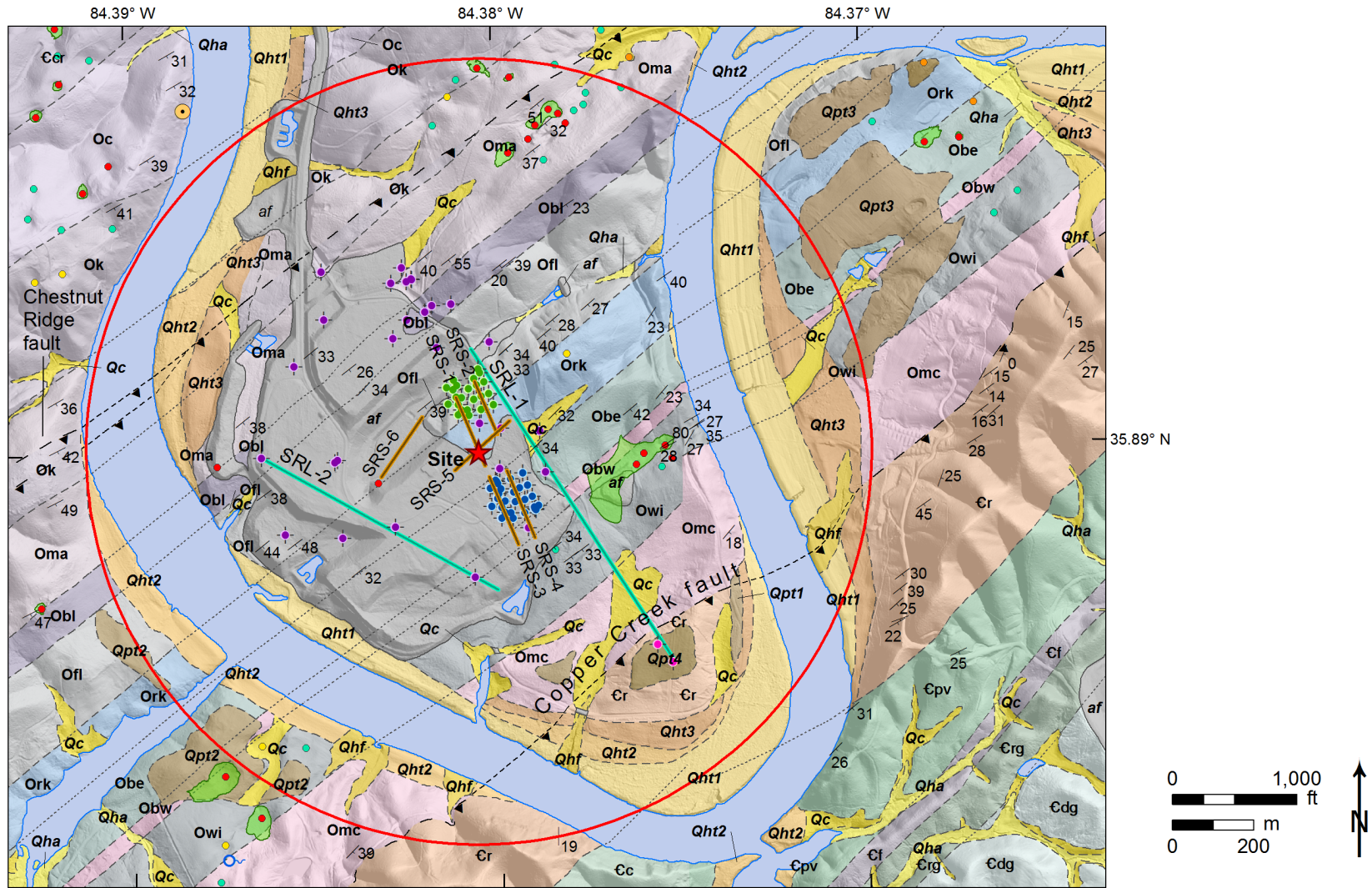
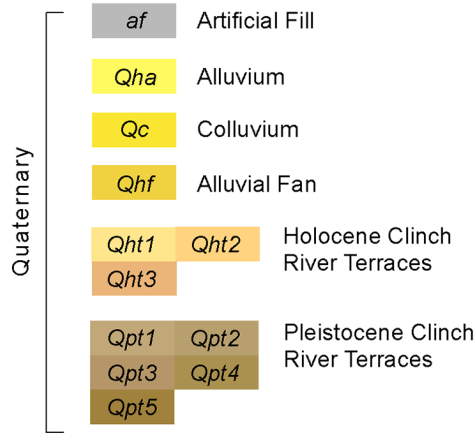
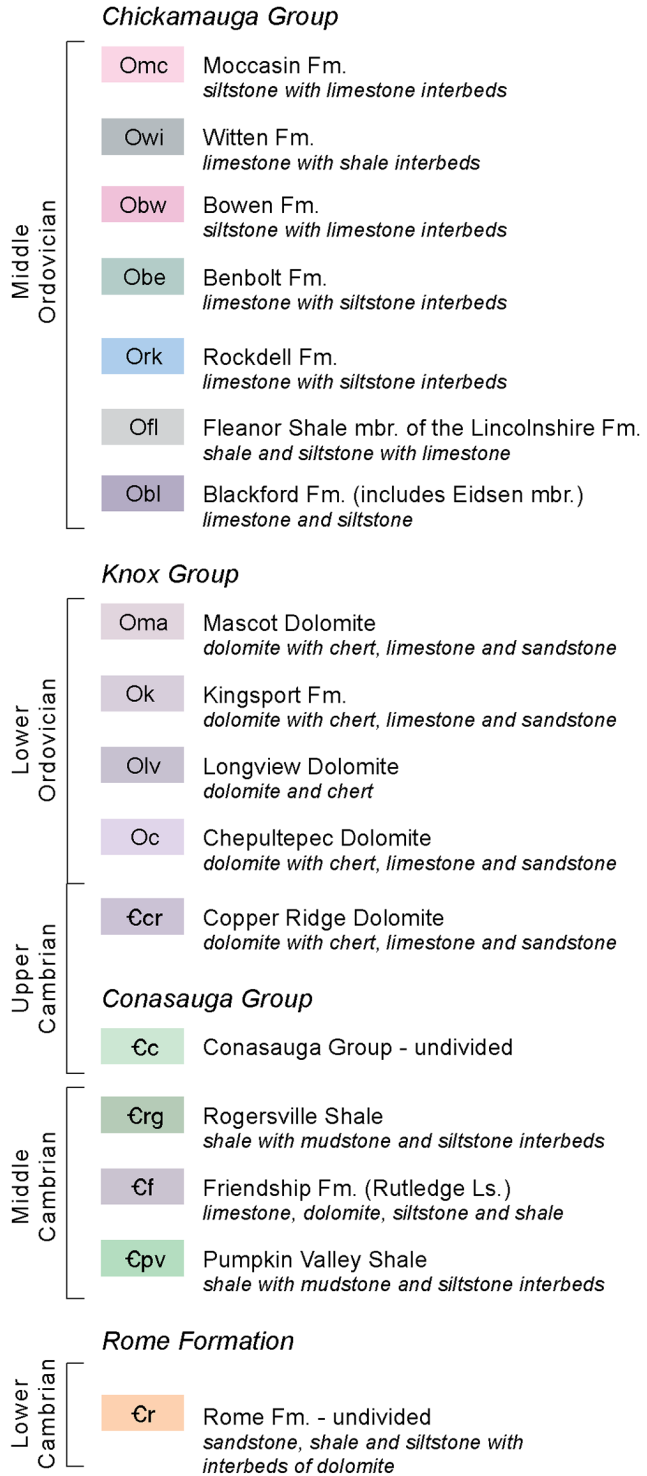


Figure 2.5.1-29. (Sheet 1 of 2) Site Location Geologic Map Showing Borings

### Quaternary Units



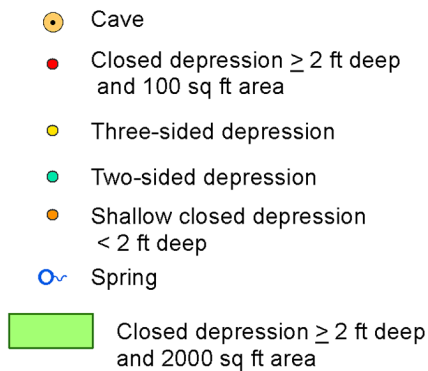
### Bedrock Units



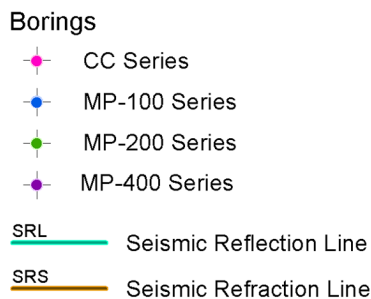
### Geologic Structures



### Karst Features

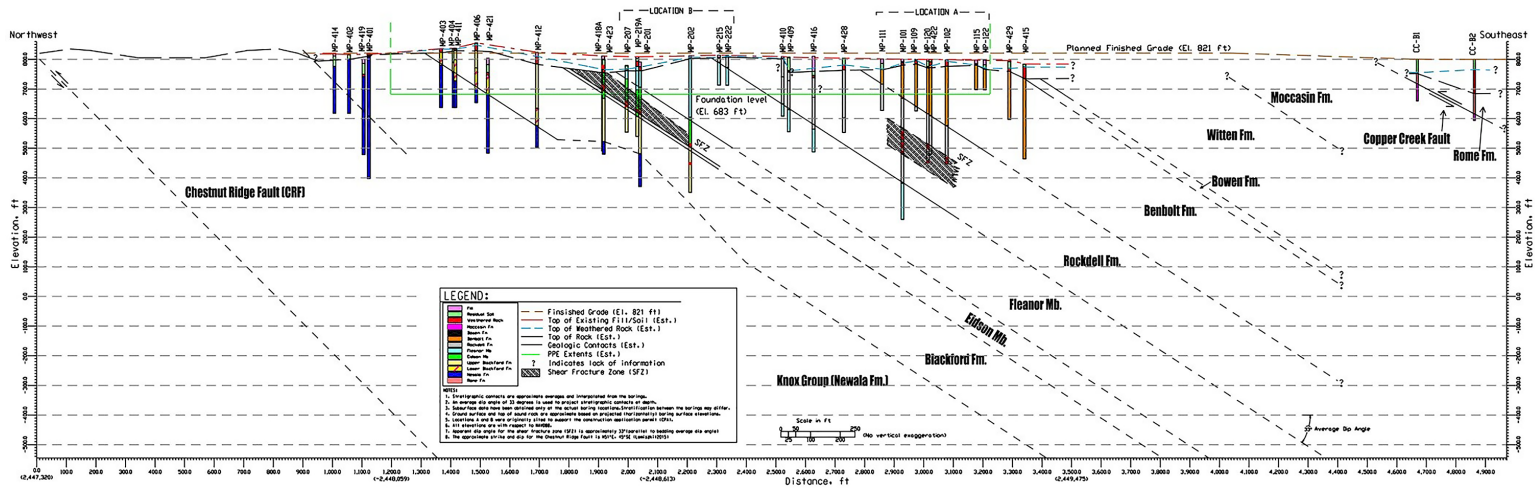


### Explorations



**Figure 2.5.1-29. (Sheet 2 of 2) Site Location Geologic Map Showing Borings**

Clinch River Nuclear Site  
 Early Site Permit Application  
 Part 2, Site Safety Analysis Report



**Figure 2.5.1-30. Geologic Cross-Section K-K' of the Clinch River Nuclear Site**

Clinch River Nuclear Site  
Early Site Permit Application  
Part 2, Site Safety Analysis Report

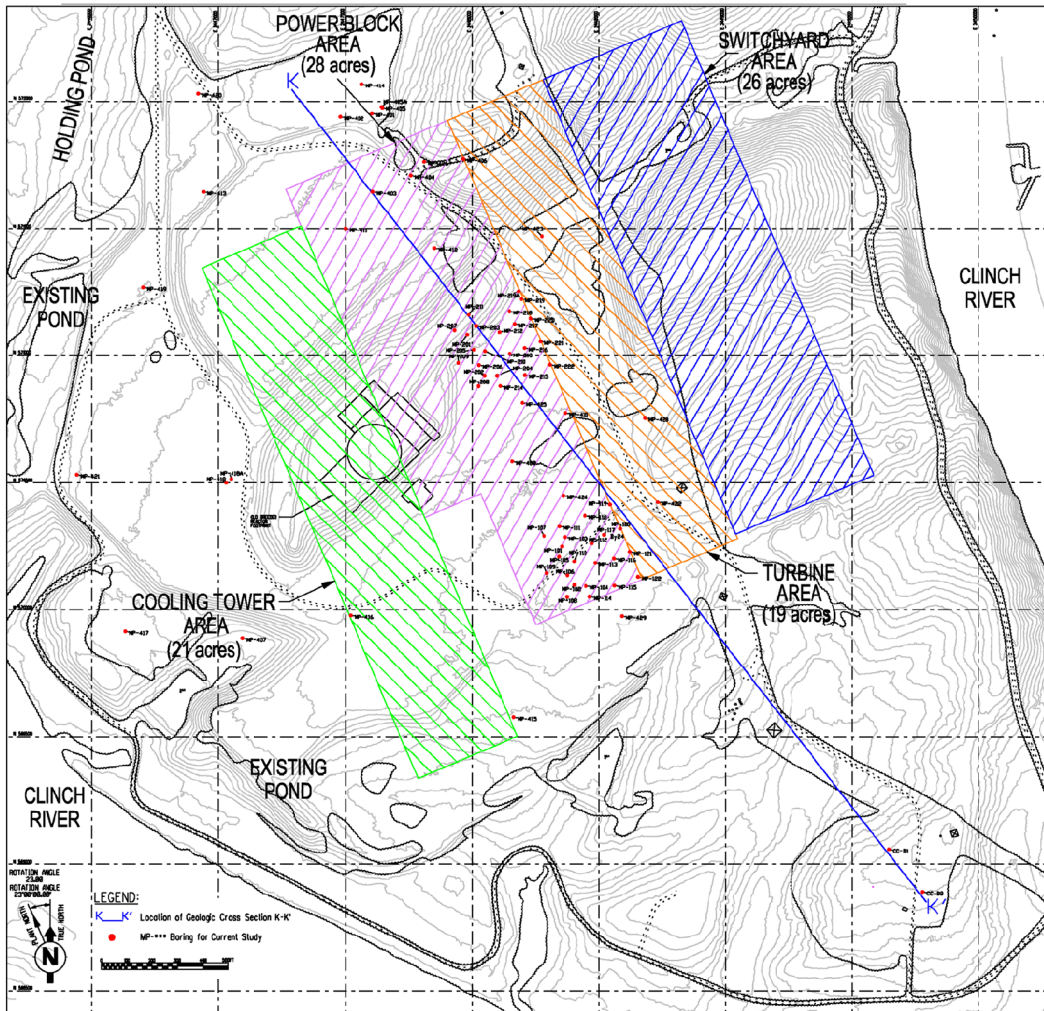
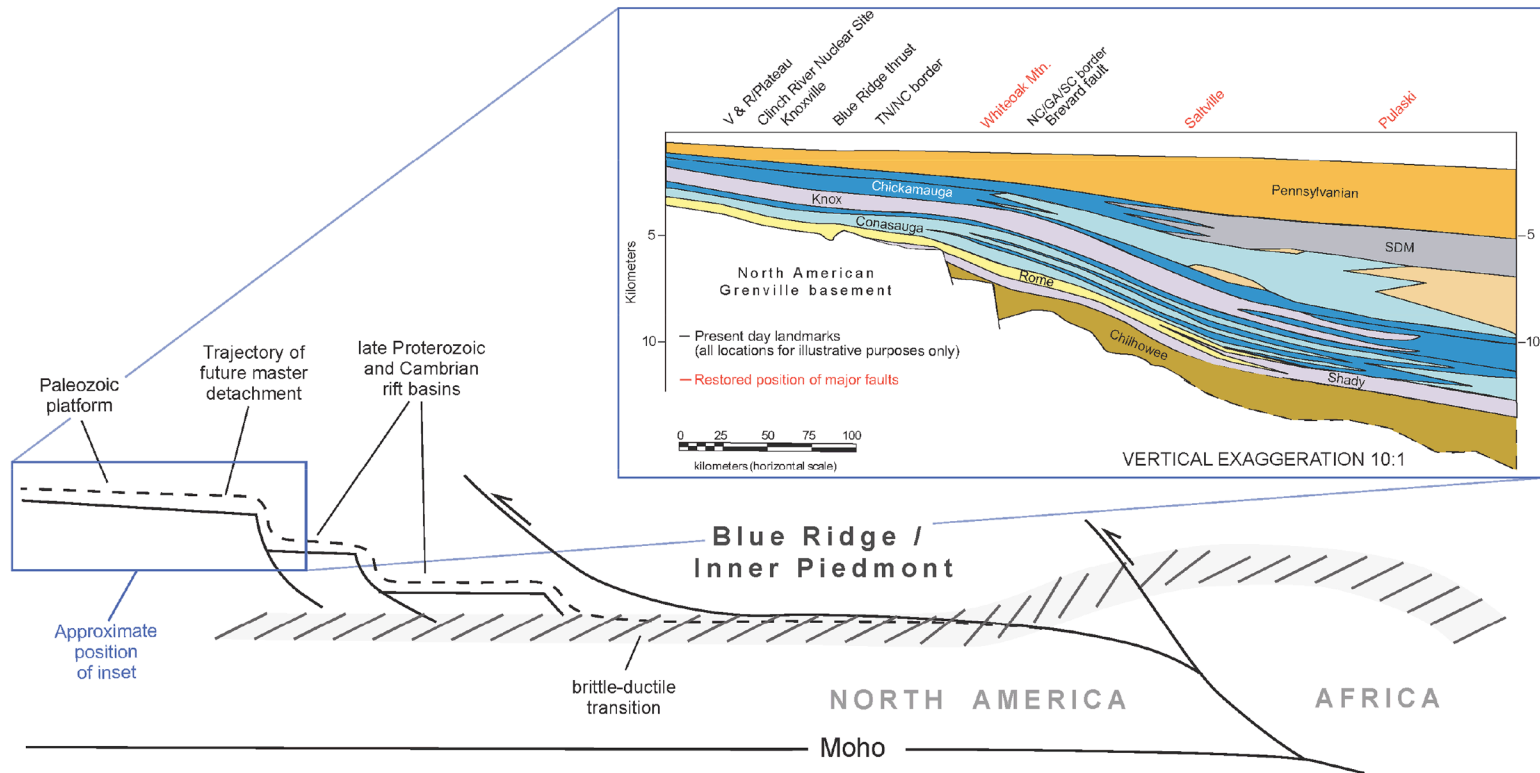


Figure 2.5.1-31. Subsurface Investigation Borehole and Geologic Cross-Section K-K' Locations



Clinch River Nuclear Site  
 Early Site Permit Application  
 Part 2, Site Safety Analysis Report



Notes:

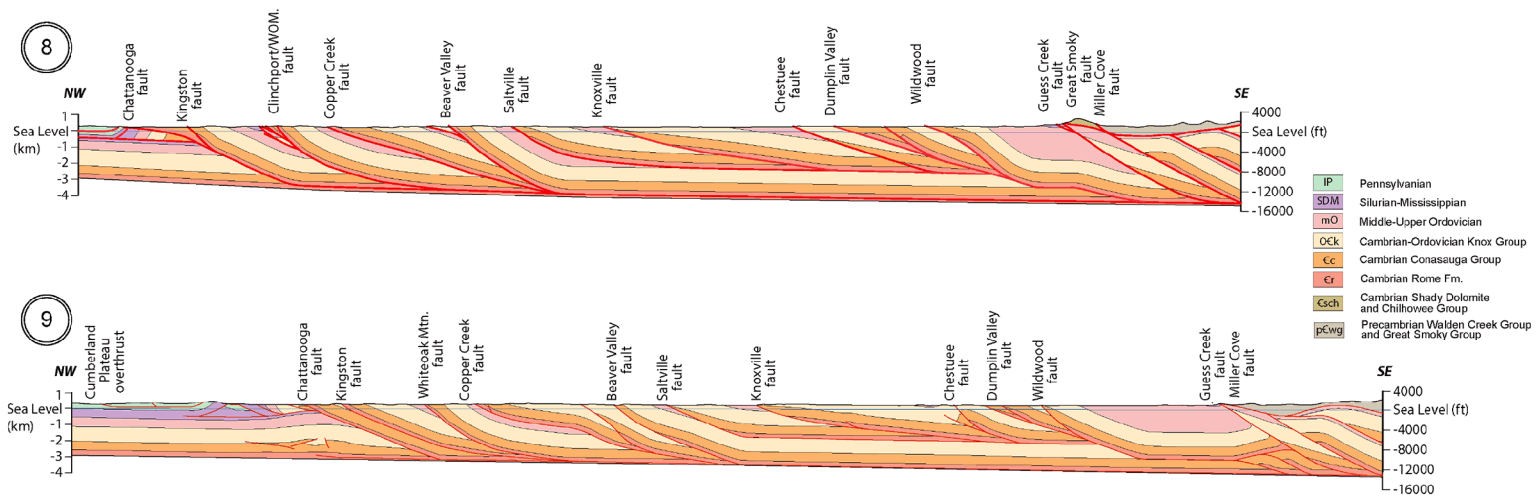
Diagrammatic illustration of the propagation of the master Appalachian detachment (modified from Reference 2.5.1-159).

Inset shows palinspastically restored facies diagram of Neoproterozoic to late Paleozoic passive margin strata that was deposited along the lapetan margin (modified from Reference 2.5.1-13).

Blue box indicates the approximate location of area depicted in inset.

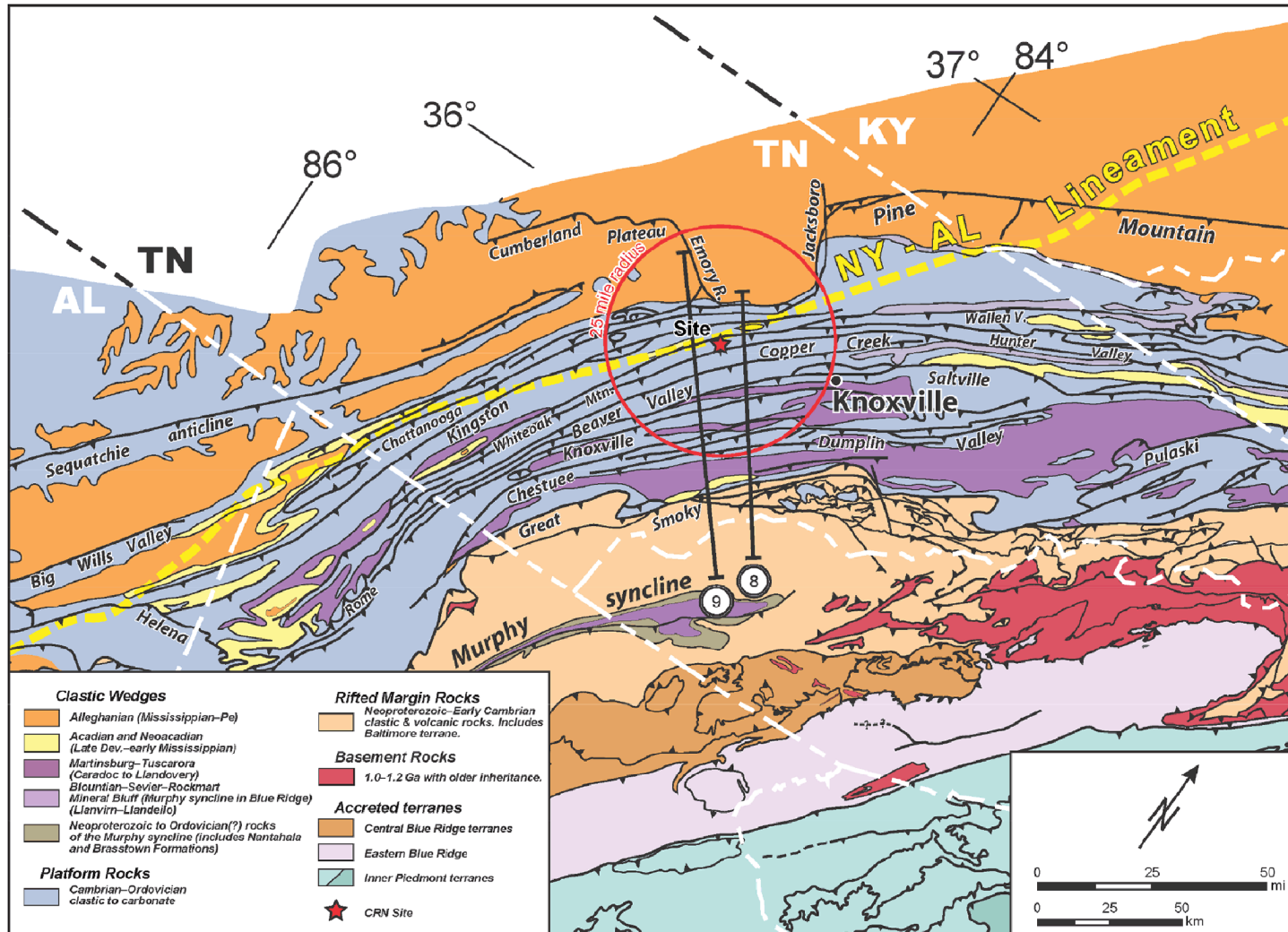
**Figure 2.5.1-32. Schematic Appalachian Detachment**

Clinch River Nuclear Site  
 Early Site Permit Application  
 Part 2, Site Safety Analysis Report



Note: Balanced cross-sections through the Valley and Ridge province from Reference 2.5.1-230 that intersect the Clinch River Nuclear site vicinity.

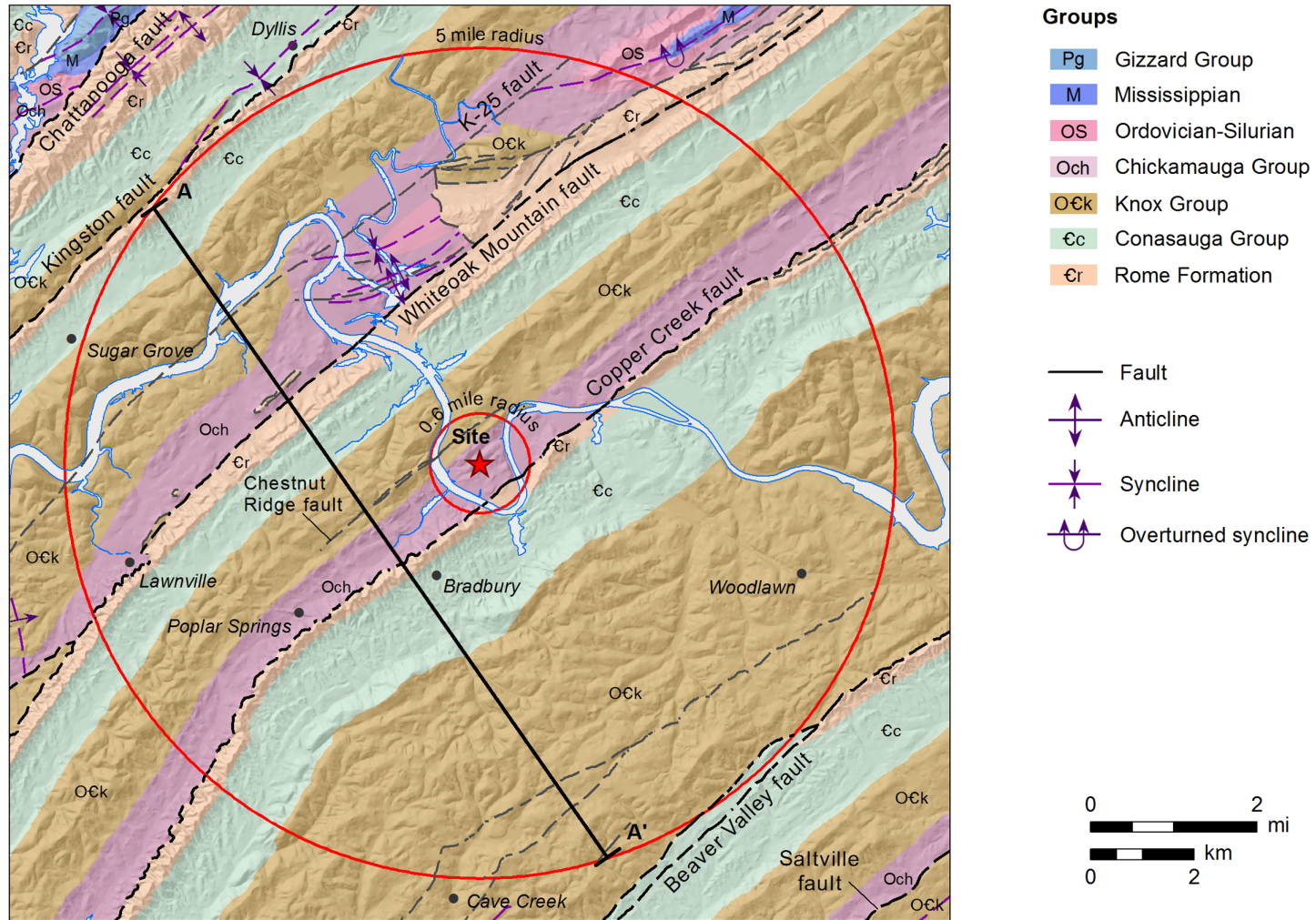
**Figure 2.5.1-33. (Sheet 1 of 2) Tectonic Map Cross-Sections—Valley and Ridge**



Notes:  
 Location of cross-sections shown in (A).  
 Tectonic map modified from Reference 2.5.1-102.

Figure 2.5.1-33. (Sheet 2 of 2) Tectonic Map Cross-Sections—Locations

Clinch River Nuclear Site  
Early Site Permit Application  
Part 2, Site Safety Analysis Report

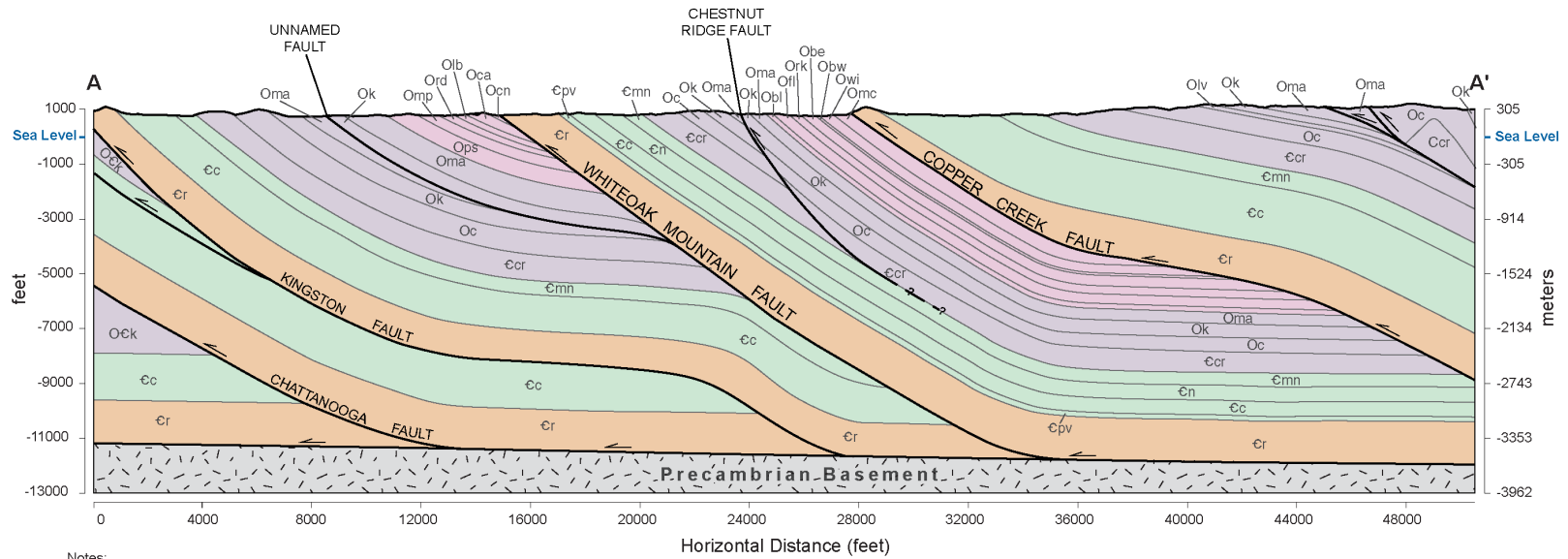


Notes:

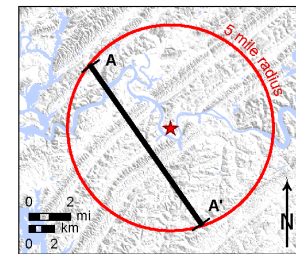
See Site Area Geologic Cross Section A-A' (Figure 2.5.1-35).  
See Plate 2 in Part 8 for more detailed geologic map of the site area.

**Figure 2.5.1-34. Site Area Geologic Map**

Clinch River Nuclear Site  
 Early Site Permit Application  
 Part 2, Site Safety Analysis Report



Notes:  
 See site area geologic map for cross-section location.  
 No vertical exaggeration.



- Ock Chickamauga Group
- Ok Knox Group
- Ocr Consauga Group
- Ocr Rome Formation

Notes:  
 See site area geologic map for cross-section location (Figure 2.5.1-34).  
 No vertical exaggeration.  
 Geologic cross-section through the site area projected to Precambrian basement.

**Figure 2.5.1-35. Site Area Geologic Cross-Section A-A'**