

## sea level trends

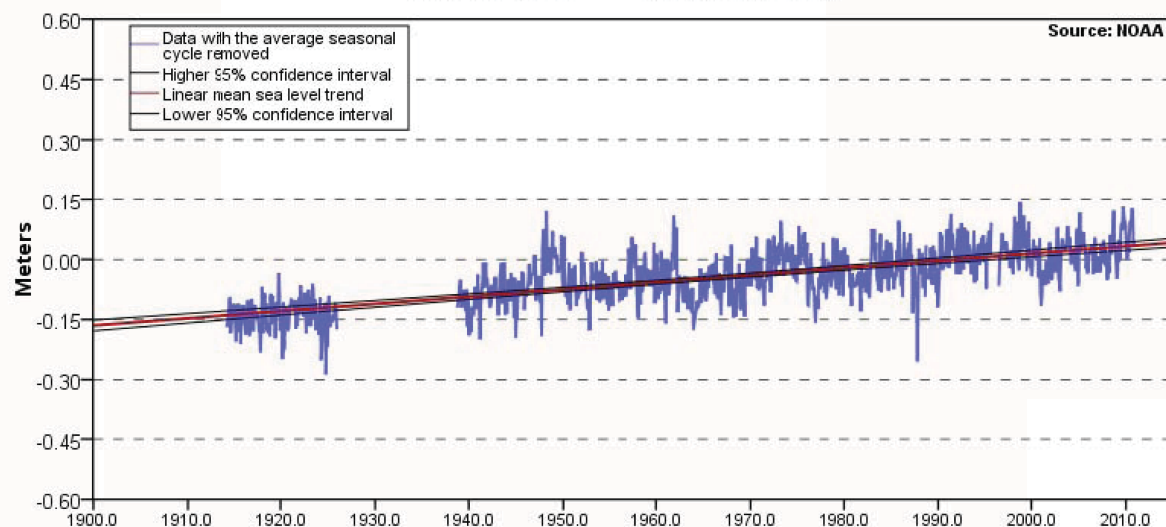
[Alabama](#)  
[Alaska](#)  
[California](#)  
[Connecticut](#)  
[Delaware](#)  
[Florida](#)  
[Georgia](#)  
[Hawaii](#)  
[Louisiana](#)  
[Maine](#)  
[Maryland](#)  
[Massachusetts](#)  
[New Jersey](#)  
[New York](#)  
[North Carolina](#)  
[Oregon](#)  
[Pennsylvania](#)  
[Rhode Island](#)  
[South Carolina](#)  
[Texas](#)  
[Virginia](#)  
[Washington](#)  
[Washington DC](#)  
[Island Stations](#)

[Global Stations](#)

[main page](#)

## Mean Sea Level Trend 8727520 Cedar Key, Florida

Cedar Key, FL 1.80 +/- 0.19 mm/yr



The mean sea level trend is 1.80 millimeters/year with a 95% confidence interval of +/- 0.19 mm/yr based on monthly mean sea level data from 1914 to 2006 which is equivalent to a change of 0.59 feet in 100 years.

The plot shows the monthly mean sea level without the regular seasonal fluctuations due to winds, atmospheric pressures, and ocean currents. The long-term linear trend is also shown. The plotted values are relative to the most recent [Mean Sea Level datum established by tide gauges](#). Tide gauge stations are available as a [table in millimeters/year](#) or a [table in feet/century](#) (0.3 meters = 1 foot).

If present, solid vertical lines indicate times of any major earthquakes in the vicinity of the station or any periods of questionable data.

Duke Energy Florida  
Levy Nuclear Plant  
Units 1 and 2  
Part 2, Final Safety Analysis Report

Mean Sea Level Trend at Cedar Key, Florida  
(Station: 8727520)